

# HPLC Application

ID No.: 23585

## Nucleotides on Luna Omega Polar C18 50x2.1mm

**Column:** Luna Omega 1.6 um Polar C18 100 A LC Column 50 x 2.1 mm, Ea

**Dimensions:** 50 x 2.1 mm ID

**Order No:** 00B-4748-AN

**Elution Type:** Isocratic

**Eluent A:** 20mM Ammonium Formate pH 3.0

Gradient	Step No.	Time (min)	Pct A
<b>Profile:</b>	<b>1</b>	<b>9</b>	<b>100</b>

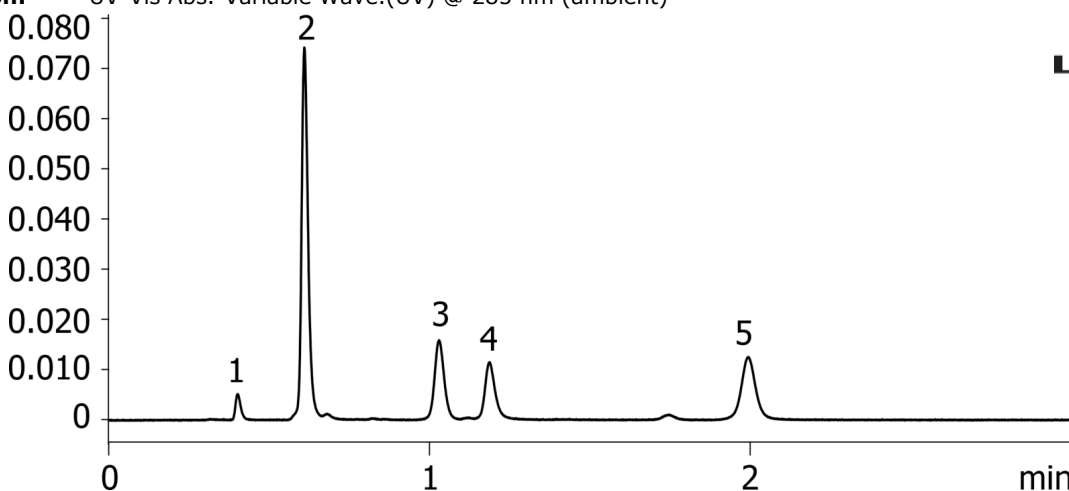
**Flow Rate:** 0.4 mL/min

**Col. Temp.:** ambient

**Detection:** UV-Vis Abs.-Variable Wave.(UV) @ 285 nm (ambient)



Products used in this application:



### ANALYTES:

- 1 Thiourea
- 2 5-Fluorocytosine
- 3 Guanosine-5-Monophosphate
- 4 Adenine
- 5 Thymine

