

HPLC Application

ID No.: 23588

SAMHSA workplace drug testing panel using Luna Omega Polar C18 50x2.1mm

Column: Luna Omega 1.6 um Polar C18 100 A LC Column 50 x 2.1 mm, Ea

Dimensions: 50 x 2.1 mm ID

Order No: 00B-4748-AN

Elution Type: Gradient

Eluent A: Water with 0.1% formic acid

Eluent B: Acetonitrile with 0.1% formic acid

Gradient Profile:	Step No.	Time (min)	Pct A	Pct B
	1	0	85	15
	2	2	0	100
	3	3	0	100
	4	3.1	85	15

Flow Rate: 400 µL/min

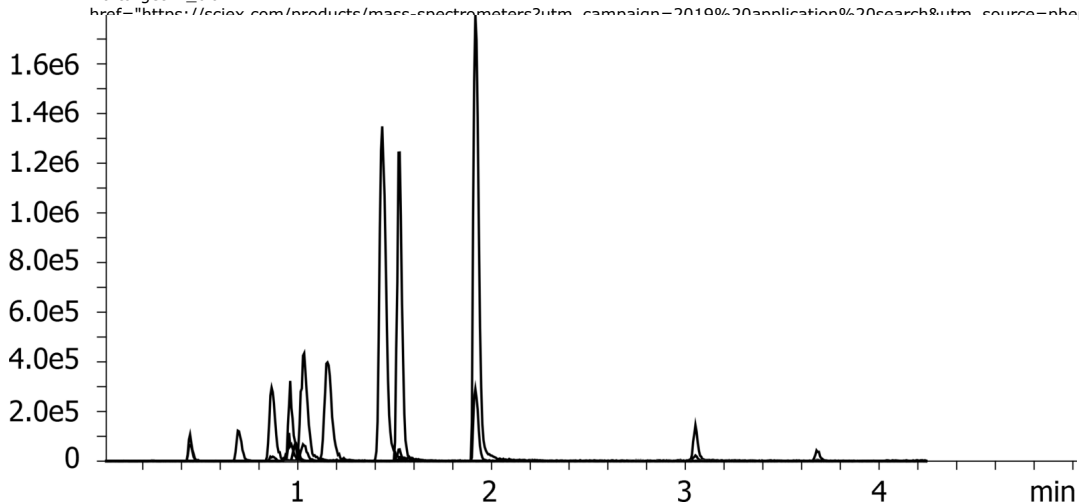
Col. Temp.: 25 °C

Detection: Tandem Mass Spec (MS-MS) @ (450 °C)

Detector Info: SCIEX<



Products used in this application:



SAMHSA workplace drug testing panel using Luna Omega Polar C18 50x2.1mm

ANALYTES:

- 1 Morphine
- 2 Codeine
- 3 Amphetamine
- 4 MDA
- 5 Methamphetamine
- 6 6-MAM
- 7 MDMA
- 8 MDEA
- 9 BZE
- 10 PCP
- 11 THC-COOH
- 12 THC

