

HPLC Application

ID No.: 23592

pMETS in plasma using Luna Omega Polar C18 100x2.1mm

Column: Luna Omega 1.6 um Polar C18 100 A LC Column 100 x 2.1 mm, Ea

Dimensions: 100 x 2.1 mm ID

Order No: 00D-4748-AN

Elution Type: Gradient

Eluent A: Water with 0.1% formic acid

Eluent B: Acetonitrile with 0.1% formic acid

| Gradient Profile: | Step No. | Time (min) | Pct A | Pct B |
|-------------------|----------|------------|-------|-------|
| | 1 | 0 | 100 | 0 |
| | 2 | 3 | 10 | 90 |
| | 3 | 3.1 | 100 | 0 |

Flow Rate: 400 µL/min

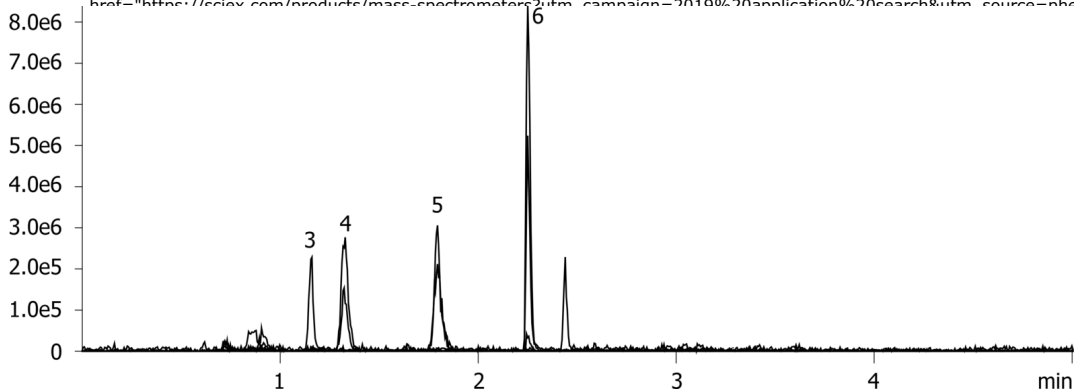
Col. Temp.: 50 °C

Detection: Tandem Mass Spec (MS-MS) @ (450 °C)

Detector Info:

<a target="_blank"

href="https://sciex.com/products/mass-spectrometer?utm_campaign=2019%20application%20search&utm_source=phenomenex&utm_medium=referral">SCIEX<



Products used in this application:



ANALYTES:

- 1 Norepinephrine
Retention Time: 0.71 min
- 2 Epinephrine
Retention Time: 0.9 min
- 3 Normetanephrine
Retention Time: 1.12 min
- 4 Dopamine
Retention Time: 1.28 min
- 5 Metanephrine
Retention Time: 1.72 min
- 6 3-Methoxy tyramine
Retention Time: 2.23 min
- 7 Homovanillic acid (HVA)
- 8 Homovanillic acid (HVA)

