

HPLC Application

ID No.: 23597

ETG/ETS in urine using Luna Omega Polar C18 100x2.1mm

Column: Luna Omega 1.6 um Polar C18 100 A LC Column 100 x 2.1 mm, Ea

Dimensions: 100 x 2.1 mm ID

Order No: 00D-4748-AN

Elution Type: Gradient

Eluent A: 10mM ammonium formate with 0.1% formic acid

Eluent B: Acetonitrile with 0.1% formic acid

Gradient Profile:	Step No.	Time (min)	Pct A	Pct B
	1	0	100	0
	2	1	50	50
	3	1.1	100	0
	4	5	100	0

Flow Rate: 300 µL/min

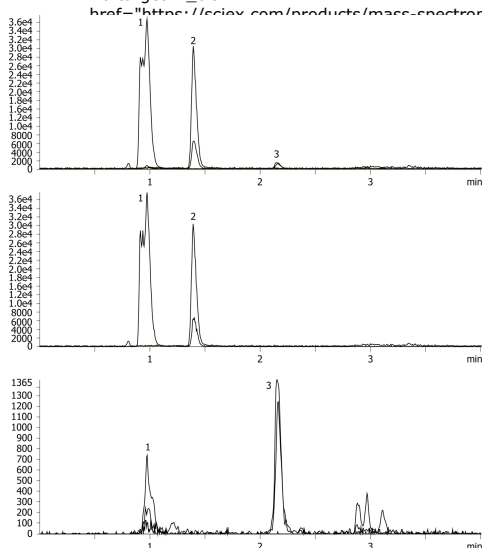
Col. Temp.: 25 °C

Detection: Tandem Mass Spec (MS-MS) @ (450 °C)

Detector Info: SCIEX <



Products used in this application:



ANALYTES:

- 1** Urine interference
Retention Time: 0.99 min
- 2** ETS
Retention Time: 1.4 min
- 3** ETG
Retention Time: 2.17 min