

# HPLC Application

ID No.: 23599

## Tryptic digest by LCMS using Luna Omega Polar C18 100x2.1mm

**Column:** Luna Omega 1.6 um Polar C18 100 A LC Column 100 x 2.1 mm, Ea

**Dimensions:** 100 x 2.1 mm ID

**Order No:** 00D-4748-AN

**Elution Type:** Gradient

**Eluent A:** Water with 0.1% formic acid

**Eluent B:** Acetonitrile with 0.1% formic acid

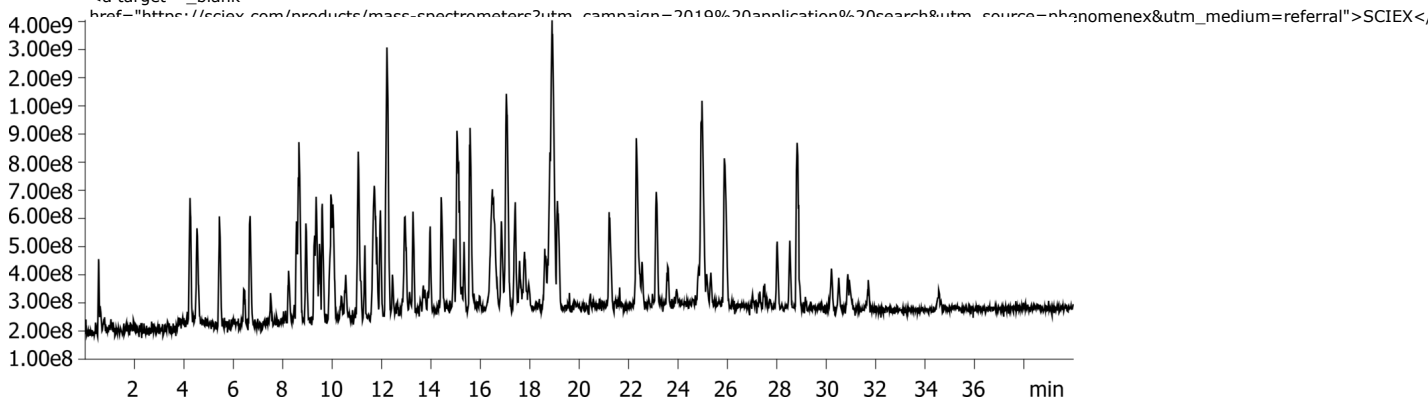
Gradient Profile:	Step No.	Time (min)	Pct A	Pct B
	1	0	97	3
	2	50	50	50
	3	50.1	97	3

**Flow Rate:** 400 µL/min

**Col. Temp.:** 40 °C

**Detection:** Tandem Mass Spec (MS-MS) @ (450 °C)

**Detector Info:**



Products used in this application:



### ANALYTES:

- 1 Tryptic digest

