

HPLC Application

ID No.: 23600

Tryptic digest by LCMS using Luna Omega C18 100x2.1mm

Column: Luna Omega 1.6 μm C18 100 \AA , LC Column 100 x 2.1 mm, Ea

Dimensions: 100 x 2.1 mm ID

Order No: 00D-4742-AN

Elution Type: Gradient

Eluent A: Water with 0.1% formic acid

Eluent B: Acetonitrile with 0.1% formic acid

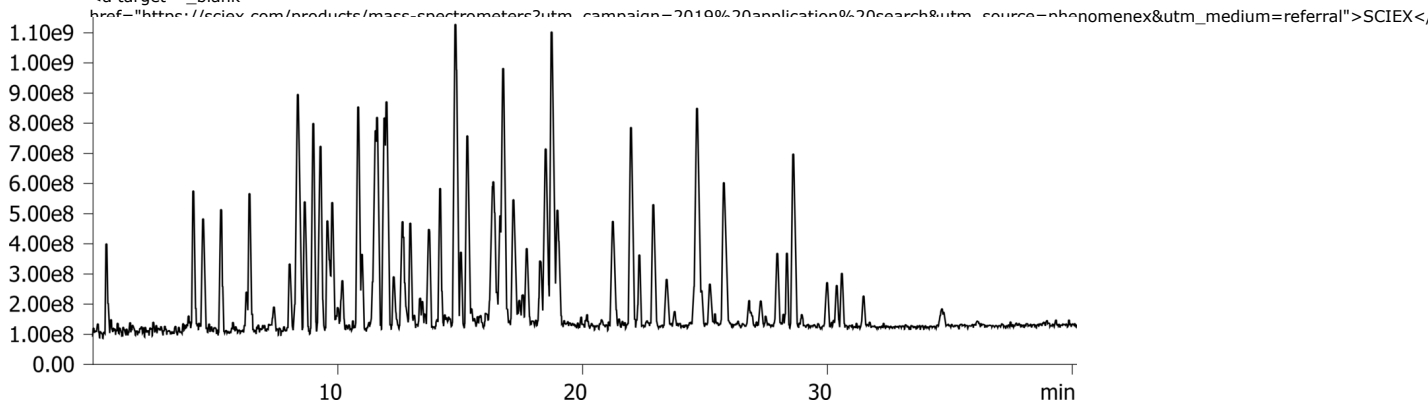
Gradient Profile:	Step No.	Time (min)	Pct A	Pct B
	1	0	97	3
	2	50	50	50
	3	50.1	97	3

Flow Rate: 400 $\mu\text{L}/\text{min}$

Col. Temp.: 40 $^{\circ}\text{C}$

Detection: Tandem Mass Spec (MS-MS) @ (450 $^{\circ}\text{C}$)

Detector Info:



Products used in this application:



ANALYTES:

- 1 Tryptic digest

