

HPLC Application

ID No.: 23604

Ketotifen impurities on Luna Omega Polar C18 50x2.1mm

Column: Luna Omega 1.6 um Polar C18 100 A LC Column 50 x 2.1 mm, Ea

Dimensions: 50 x 2.1 mm ID

Order No: 00B-4748-AN

Elution Type: Gradient

Eluent A: 0.1% Formic Acid in Water

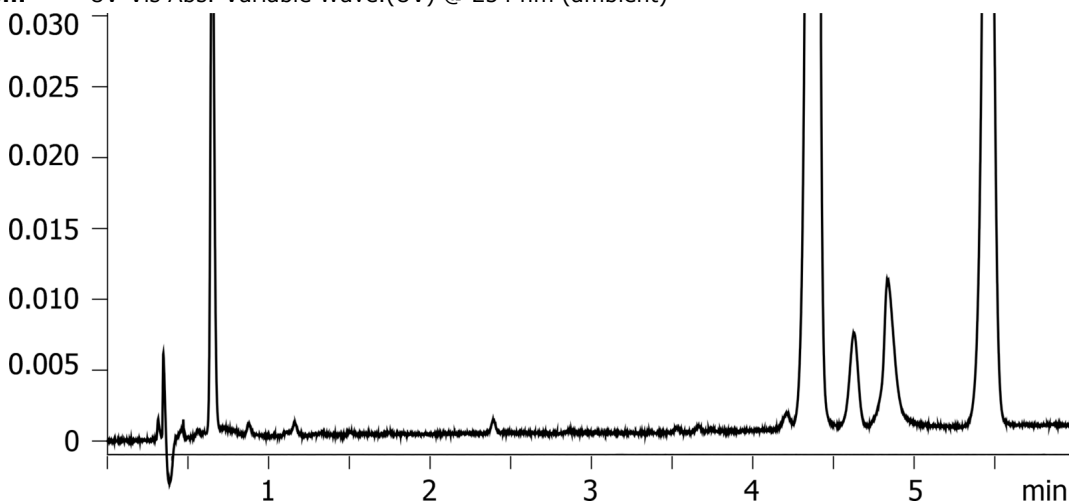
Eluent B: 0.1% Formic Acid in Acetonitrile

Gradient Profile:	Step No.	Time (min)	Pct A	Pct B
	1	0	95	5
	2	2.5	85	15
	3	6	80	20
	4	10	70	30
	5	10.01	95	5
	6	13	95	5

Flow Rate: 0.4 mL/min

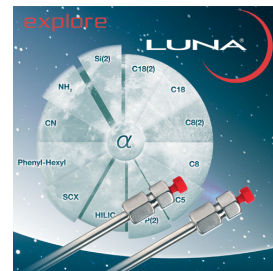
Col. Temp.: ambient

Detection: UV-Vis Abs.-Variable Wave.(UV) @ 254 nm (ambient)



ANALYTES:

- 1 Ketotifen



Products used in this application:

