

HPLC Application

ID No.: 23606

Peptides in TFA using Luna Omega Polar C18 50x2.1mm

Column: Luna Omega 1.6 um Polar C18 100 A LC Column 50 x 2.1 mm, Ea

Dimensions: 50 x 2.1 mm ID

Order No: 00B-4748-AN

Elution Type: Gradient

Eluent A: Water with 0.1% TFA

Eluent B: Acetonitrile with 0.1% TFA

Gradient Profile:	Step No.	Time (min)	Pct A	Pct B
	1	0	100	0
	2	1	100	0
	3	5	35	65

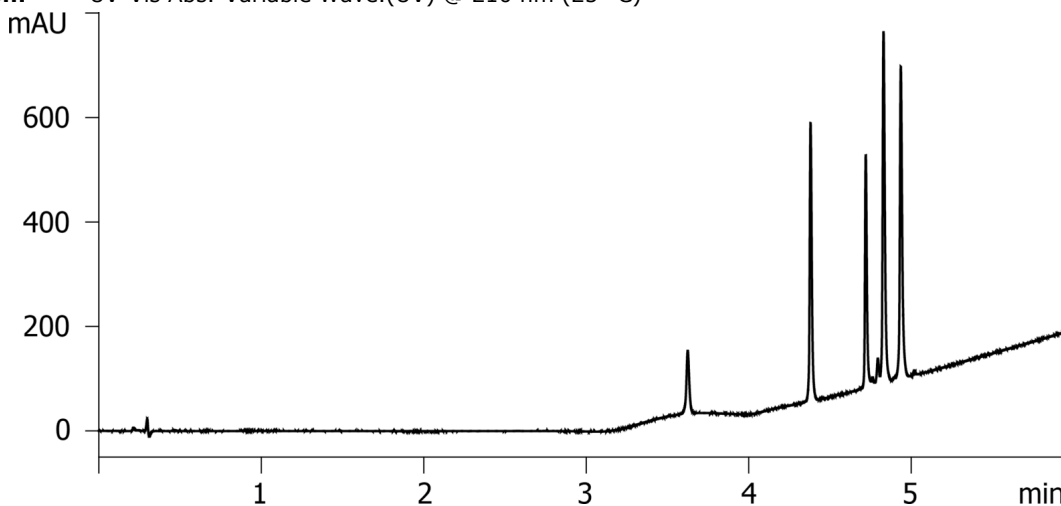
Flow Rate: 600 µL/min

Col. Temp.: 25 °C

Detection: UV-Vis Abs.-Variable Wave.(UV) @ 210 nm (25 °C)



Products used in this application:



ANALYTES:

- 1 Gly-Tyr
Retention Time: 3.625 min
- 2 Val-Tyr-Val
Retention Time: 4.38 min
- 3 Met-Enkephalin
Retention Time: 4.72 min
- 4 Leu-Enkephalin
Retention Time: 4.829 min
- 5 Angiotensin II
Retention Time: 4.936 min

