

# HPLC Application

ID No.: 23609

## Peptides in TFA using Luna Omega C18 50x2.1mm

**Column:** Luna Omega 1.6  $\mu$ m C18 100 Å, LC Column 50 x 2.1 mm, Ea

**Dimensions:** 50 x 2.1 mm ID

**Order No:** 00B-4742-AN

**Elution Type:** Gradient

**Eluent A:** Water with 0.1% TFA

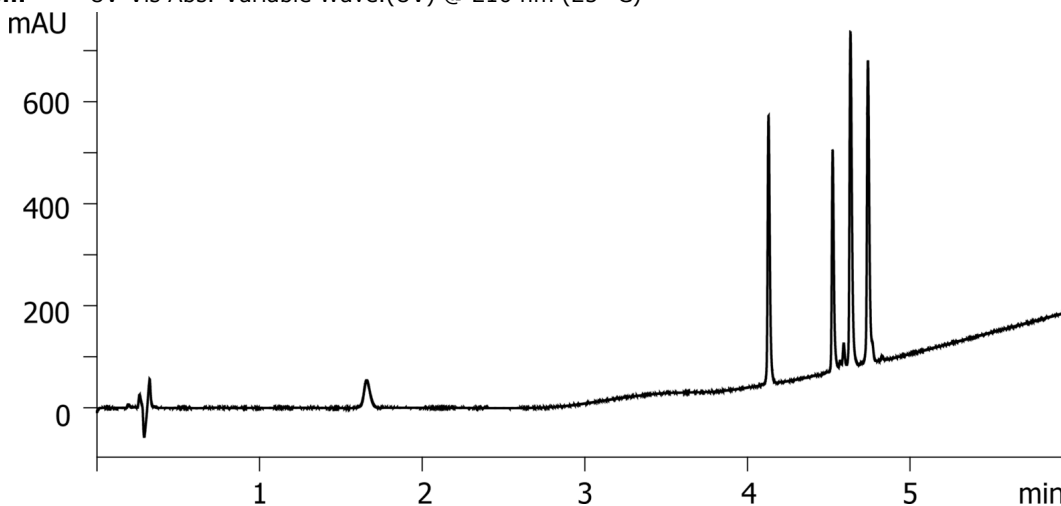
**Eluent B:** Acetonitrile with 0.1% TFA

Gradient Profile:	Step No.	Time (min)	Pct A	Pct B
	1	0	100	0
	2	1	100	0
	3	5	35	65

**Flow Rate:** 600  $\mu$ L/min

**Col. Temp.:** 25 °C

**Detection:** UV-Vis Abs.-Variable Wave.(UV) @ 210 nm (25 °C)



### ANALYTES:

- 1 Gly-Tyr  
Retention Time: 1.659 min
- 2 Val-Tyr-Val  
Retention Time: 4.13 min
- 3 Met-Enkephalin  
Retention Time: 4.524 min
- 4 Leu-Enkephalin  
Retention Time: 4.634 min
- 5 Angiotensin II  
Retention Time: 4.741 min



Products used in this application:

