

# HPLC Application

ID No.: 23611

## Beta-blockers using Luna Omega Polar C18 50x2.1mm

**Column:** Luna Omega 1.6 um Polar C18 100 A LC Column 50 x 2.1 mm, Ea

**Dimensions:** 50 x 2.1 mm ID

**Order No:** 00B-4748-AN

**Elution Type:** Gradient

**Eluent A:** 20mM Potassium Phosphate pH 7.2

**Eluent B:** Acetonitrile

Gradient Profile:	Step No.	Time (min)	Pct A	Pct B
	1	0	95	5
	2	6	65	35

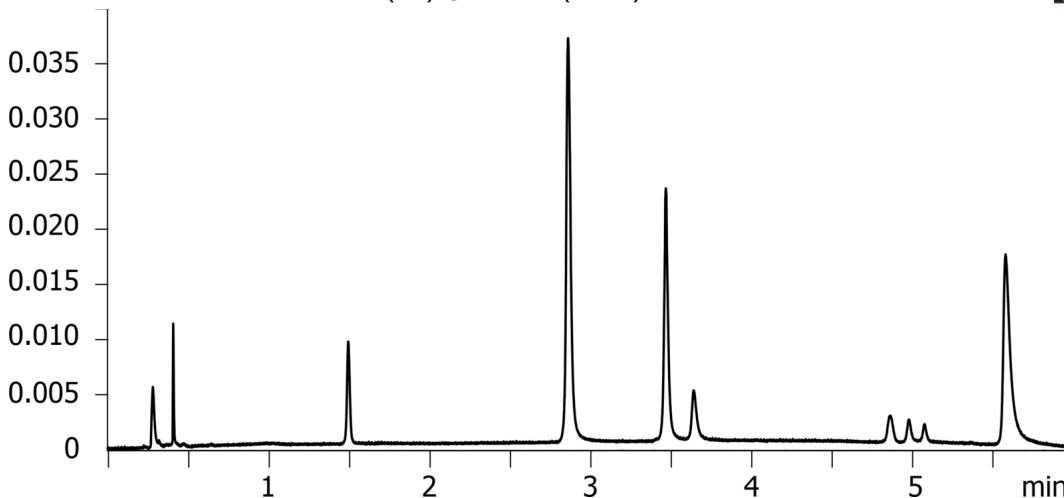
**Flow Rate:** 400 mL/min

**Col. Temp.:** 25 °C

**Detection:** UV-Vis Abs.-Variable Wave.(UV) @ 280 nm (25 °C)



Products used in this application:



### ANALYTES:

- 1 Atenolol  
Retention Time: 1.554 min
- 2 Pindolol  
Retention Time: 2.973 min
- 3 Timolol  
Retention Time: 3.604 min
- 4 Metoprolol  
Retention Time: 3.782 min
- 5 Labetolol  
Retention Time: 5.06 min
- 6 Alprenolol  
Retention Time: 5.171 min
- 7 Unknown impurity  
Retention Time: 5.273 min
- 8 Propranolol  
Retention Time: 5.795 min

