

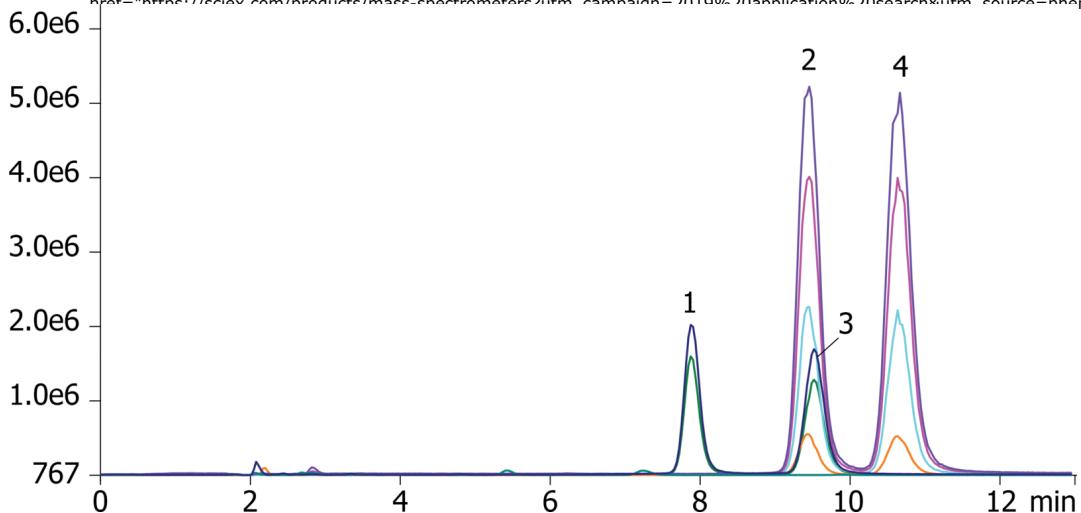
## Chiral Amphetamines Lux 3µm AMP 150x3mm

**Column:** Lux® 3 µm AMP, LC Column 150 x 3.0 mm, Ea  
**Dimensions:** 150 x 3 mm ID  
**Order No:** 00F-4751-Y0  
**Elution Type:** Gradient  
**Eluent A:** 5 mM Ammonium Bicarbonate, adjusted to pH 11 with ammonium hydroxide  
**Eluent B:** Methanol

Gradient Profile:	Step No.	Time (min)	Pct A	Pct B
	1	0	40	60
	2	10	40	60
	3	11	5	95
	4	13	5	95
	5	13.1	40	60

**Flow Rate:** 0.42 mL/min  
**Col. Temp.:** ambient  
**Detection:** Tandem Mass Spec (MS-MS) @ (ambient)

**Detector Info:** [https://sciex.com/products/mass-spectrometers?utm\\_campaign=2019%20application%20search&utm\\_source=phenomenex&utm\\_medium=referral](https://sciex.com/products/mass-spectrometers?utm_campaign=2019%20application%20search&utm_source=phenomenex&utm_medium=referral)



### ANALYTES:

- 1 R(-)-Amphetamine  
Retention Time: 7.89 min
- 2 S(+)-Amphetamine  
Retention Time: 9.58 min
- 3 R(-)-Methamphetamine  
Retention Time: 9.34 min
- 4 S(+)-Methamphetamine  
Retention Time: 10.53 min
- 5 Phentermine  
Retention Time: 13.81 min



Products used in this application:

