

HPLC Application

ID No.: 23640

Chiral Amphetamines with Ephedrines & Pseudoephedrines on Lux 3 μ m AMP 150x3mm

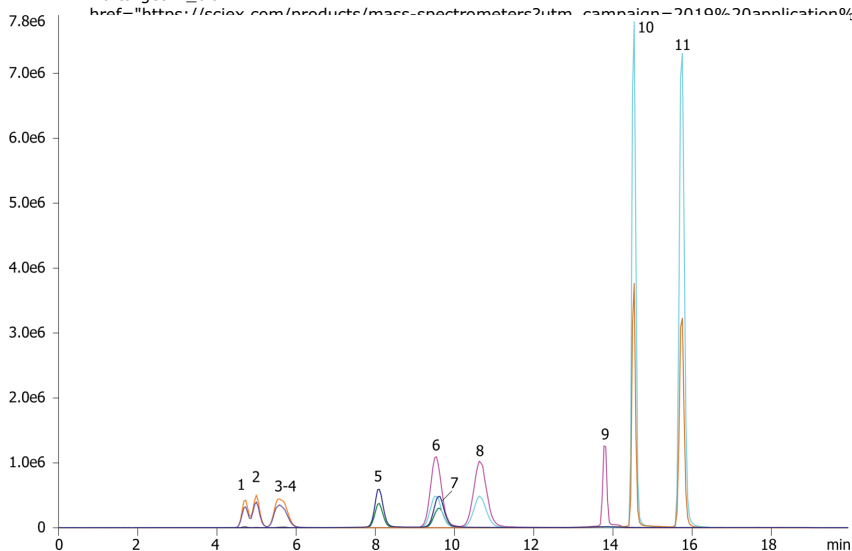
Column: Lux[®] 3 μ m AMP, LC Column 150 x 3.0 mm, Ea
Dimensions: 150 x 3 mm ID
Order No: 00F-4751-Y0
Elution Type: Gradient
Eluent A: 5 mM Ammonium Bicarbonate, adjusted to pH 11 with ammonium hydroxide
Eluent B: Methanol

Gradient Profile:	Step No.	Time (min)	Pct A	Pct B
	1	0	40	60
	2	10	40	60
	3	11	5	95
	4	16	5	95
	5	16.1	40	60

Flow Rate: 0.42 mL/min
Col. Temp.: ambient
Detection: Tandem Mass Spec (MS-MS) @ (ambient)

Detector Info:

<a target="_blank"



Products used in this application:



Chiral Amphetamines with Ephedrines & Pseudoephedrines on Lux 3 μ m AMP 150x3mm

ANALYTES:

- 1 1S,2R(+)-Ephedrine
- 2 R,R(-)-Pseudoephedrine
- 3 S,S(+)-Pseudoephedrine
- 4 1R,2S(-)-Ephedrine
- 5 R(-)-Amphetamine
- 6 R(-)-Methamphetamine
- 7 S(+)-Amphetamine
- 8 S(+)-Methamphetamine
- 9 Phentermine
- 10 MDMA
- 11 MDMA

