

HPLC Application

ID No.: 23669

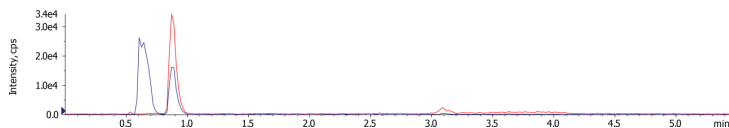
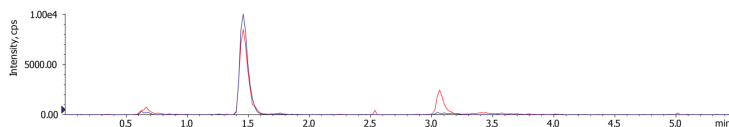
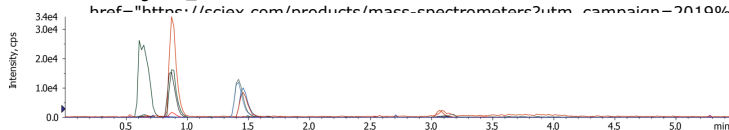
Extracted Ion Chromatograms for EtG/EtS and their Deuterated Internal Standards, Sample 1

Column: Luna Omega 1.6 um Polar C18 100 A LC Column 100 x 2.1 mm, Ea
Dimensions: 100 x 2.1 mm ID
Order No: 00D-4748-AN
Elution Type: Gradient
Eluent A: 10 mM ammonium formate in 0.1% formic acid, pH unadjusted (~3.2)
Eluent B: 50:50 MeOH/ACN

Gradient Profile:	Step No.	Time (min)	Pct A	Pct B
	1	0.01	100	0
	2	1	100	0
	3	2	75	25
	4	2.01	5	95
	5	3	5	95

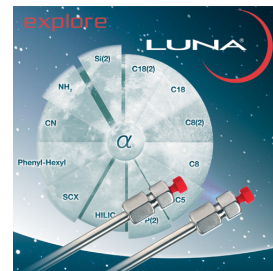
Flow Rate: 0.4 mL/min
Col. Temp.: ambient
Detection: Tandem Mass Spec (MS-MS) @ (ambient)

Detector Info: SCIEX<



ANALYTES:

1 EtG/EtS



Products used in this application:

