

## Ephedrine and Pseudoephedrine on Lux 3µm AMP 150x4.6mm

**Column:** Lux® 3 µm AMP, LC Column 150 x 4.6 mm, Ea

**Dimensions:** 150 x 4.6 mm ID

**Order No:** 00F-4751-E0

**Elution Type:** Isocratic

**Eluent A:** 5mM Ammonium Bicarbonate [pH11]

**Eluent B:** Methanol

**Eluent C:** Acetonitrile

**Eluent D:** Isopropanol

**Gradient**

Step No.	Time (min)	Pct A	Pct B	Pct C	Pct D
1	0	65	20	10	5

**Profile:**

**Flow Rate:** 0.5 mL/min

**Col. Temp.:** ambient

**Detection:** UV-Vis Abs.-Variable Wave.(UV) @ 210 nm (ambient)

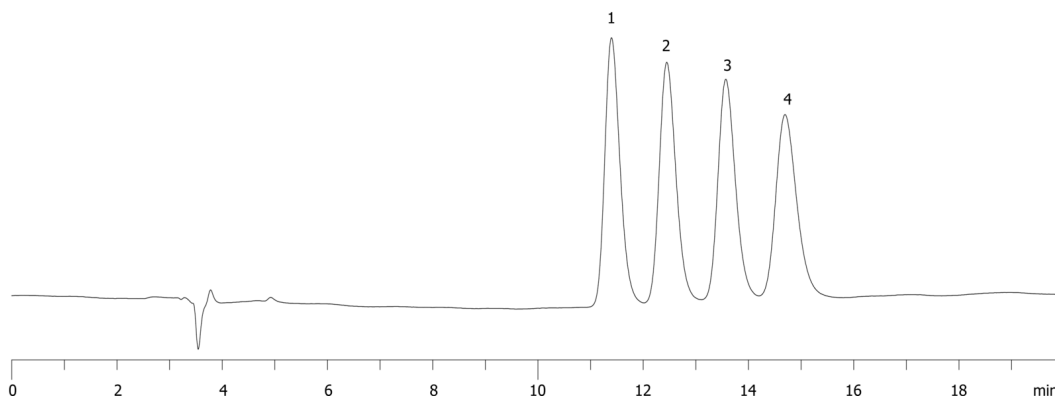
**Analyst Note:** Resolution = 1.92, 1.92, 1.72

Selectivity = 1.16, 1.15, 1.13

23670



Products used in this application:



### ANALYTES:

**1** 1S,2R (+)-Ephedrine HCl

Retention Time: 11.39 min

**2** 1R,2S (-)-Ephedrine HCl

Retention Time: 12.44 min

**3** R,R (-)-Pseudoephedrine

Retention Time: 13.58 min

**4** S,S (+)-Pseudoephedrine

Retention Time: 14.69 min

