

## Amphetamine Enantiomers using Lux 3µm AMP 150x3mm

**Column:** Lux® 3 µm AMP, LC Column 150 x 3.0 mm, Ea

**Dimensions:** 150 x 3 mm ID

**Order No:** 00F-4751-Y0

**Elution Type:** Gradient

**Eluent A:** 5 mM Ammonium Bicarbonatex

**Eluent B:** Methanol

Gradient Profile:	Step No.	Time (min)	Pct A	Pct B
	1	0	40	60
	2	10	40	60
	3	11	5	95
	4	13	5	95
	5	13.1	40	60

**Flow Rate:** 0.42 mL/min

**Col. Temp.:** ambient

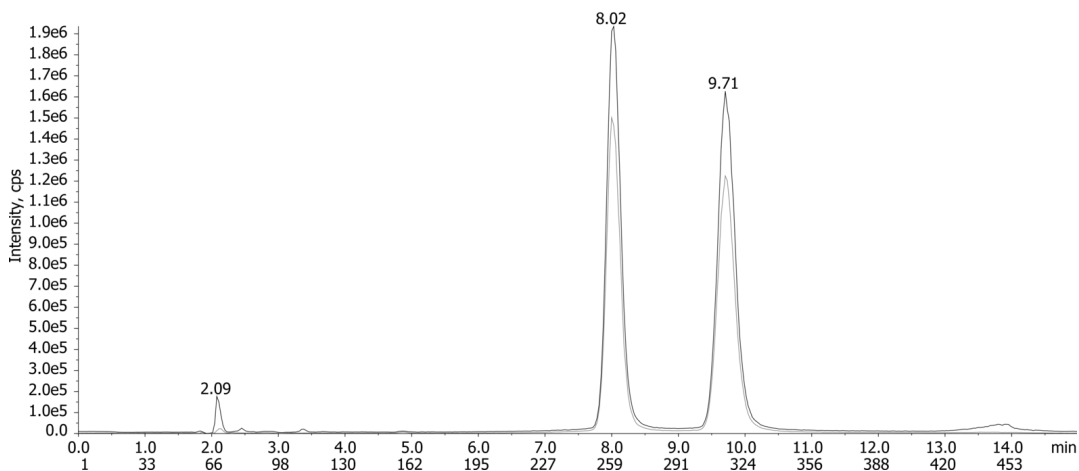
**Detection:** Tandem Mass Spec (MS-MS) @ (ambient)

**Detector Info:** <a target="\_blank" href="https://sciex.com/products/mass-spectrometers?utm\_campaign=2019%20application%20search&utm\_source=phenomenex&utm\_medium=referral">SCIE<

23675



Products used in this application:



### ANALYTES:

1 R(-)-Amphetamine

Retention Time: 8.02 min

2 S(+)-Amphetamine

Retention Time: 9.71 min

