

# HPLC Application

ID No.: 23686

## Organic acids using Luna Omega 1.6u PS C18 50x2.1mm

**Column:** Luna Omega 1.6u PS C18 100A, LC Column 50 x 2.1 mm, Ea

**Dimensions:** 50 x 2.1 mm ID

**Order No:** 00B-4752-AN

**Elution Type:** Gradient

**Eluent A:** Water with 0.1% formic acid

**Eluent B:** Acetonitrile with 0.1% formic acid

Gradient Profile:	Step No.	Time (min)	Pct A	Pct B
	1	0	100	0
	2	5	50	50
	3	5.1	100	0
	4	7	100	0

**Flow Rate:** 0.5 mL/min

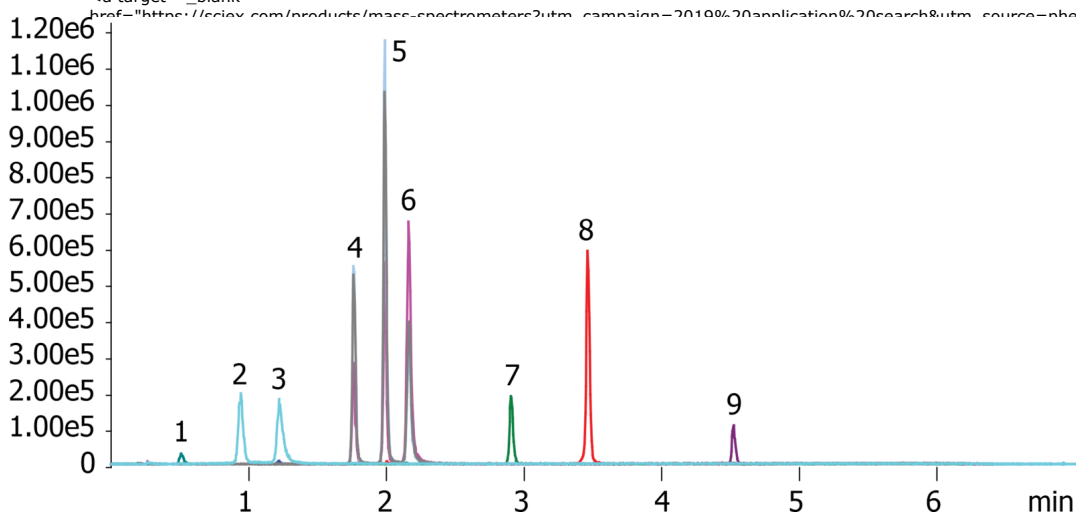
**Col. Temp.:** ambient

**Detection:** Tandem Mass Spec (MS-MS) @ (ambient)

**Detector Info:** <a target="\_blank" href="https://sciex.com/products/mass-spectrometers?utm\_campaign=2019%20application%20search&utm\_source=phenomenex&utm\_medium=referral">SCIEX</a>



Products used in this application:



### ANALYTES:

- 1 Lactic acid  
Retention Time: 0.51 min
- 2 Succinic acid  
Retention Time: 0.94 min
- 3 MMA  
Retention Time: 1.22 min
- 4 Glutaric acid  
Retention Time: 1.76 min
- 5 Ethylmalonic acid  
Retention Time: 1.98 min
- 6 MEthyl succinate  
Retention Time: 2.15 min
- 7 Hippuric acid  
Retention Time: 2.9 min
- 8 Suberic acid  
Retention Time: 3.45 min
- 9 Sebacic acid  
Retention Time: 4.51 min

©2025 Phenomenex Inc. All rights reserved.

For more information contact your Phenomenex Representative at support@phenomenex.com



Phenomenex products are available worldwide.

[www.phenomenex.com](http://www.phenomenex.com)

[support@phenomenex.com](mailto:support@phenomenex.com)