

# HPLC Application

ID No.: 23701

## Peptides by LCMS using Luna Omega 1.6u PS C18 50x2.1mm

**Column:** Luna Omega 1.6u PS C18 100A, LC Column 50 x 2.1 mm, Ea

**Dimensions:** 50 x 2.1 mm ID

**Order No:** 00B-4752-AN

**Elution Type:** Gradient

**Eluent A:** Water with 0.1% formic acid

**Eluent B:** Acetonitrile with 0.1% formic acid

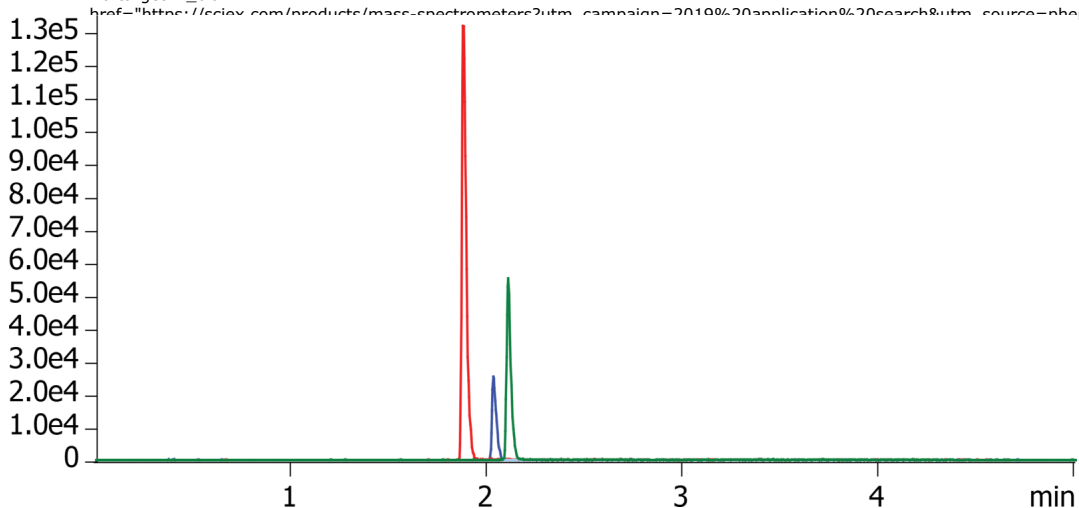
Gradient Profile:	Step No.	Time (min)	Pct A	Pct B
	1	0	97	3
	2	3	5	95
	3	3.1	97	3
	4	5	97	3

**Flow Rate:** 0.4 mL/min

**Col. Temp.:** ambient

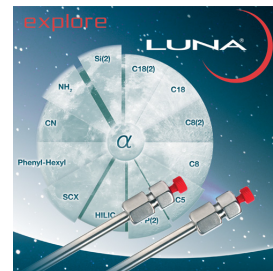
**Detection:** Tandem Mass Spec (MS-MS) @ (ambient)

**Detector Info:** <a target="\_blank" href="https://sciex.com/products/mass-spectrometers?utm\_campaign=2019%20application%20search&utm\_source=phenomenex&utm\_medium=referral">SCIEX<



### ANALYTES:

- 1 Angiotensin II
- 2 Met-Enkephalin
- 3 Leu-Enkephalin



Products used in this application:

