

HPLC Application

ID No.: 23707

ABN7 on Luna Omega 1.6u PS C18 50x2.1mm

Column: Luna Omega 1.6u PS C18 100A, LC Column 50 x 2.1 mm, Ea

Dimensions: 50 x 2.1 mm ID

Order No: 00B-4752-AN

Elution Type: Gradient

Eluent A: 0.1% Formic Acid in Water

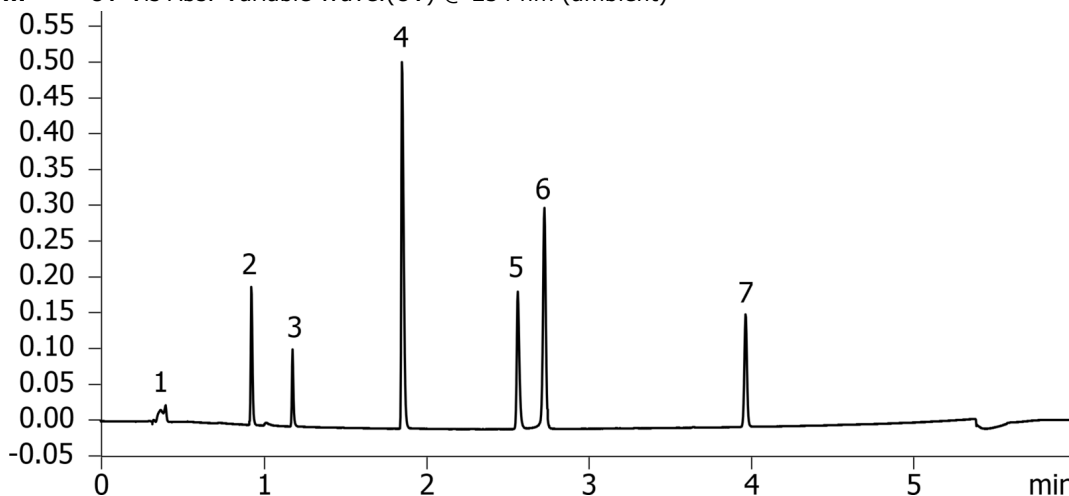
Eluent B: 0.1% Formic Acid in Acetonitrile

Gradient Profile:	Step No.	Time (min)	Pct A	Pct B
	1	0	95	5
	2	5	5	95
	3	5.01	95	5
	4	8	95	5

Flow Rate: 0.4 mL/min

Col. Temp.: ambient

Detection: UV-Vis Abs.-Variable Wave.(UV) @ 254 nm (ambient)



ANALYTES:

- 1 Uracil
- 2 Pindolol
- 3 Chlorpheniramine
- 4 Nortriptyline
- 5 5M4NBA
- 6 5-Methyl salicylaldehyde
- 7 Hexanophenone



Products used in this application:

