

HPLC Application

ID No.: 23717

EtG/EtS in Urine using Synergi 2.5µm Hydro-RP, 100x3mm (3 min)

Column: Synergi[™] 2.5 µm Hydro-RP 100 Å, LC Column 100 x 3 mm, Ea

Dimensions: 100 x 3 mm ID

Order No: 00D-4387-Y0

Elution Type: Gradient

Eluent A: 10mM ammonium formate + 0.1% formic acid in water

Eluent B: Acetonitrile

Gradient Profile:	Step No.	Time (min)	Pct A	Pct B
	1	0	100	0
	2	1.5	5	95
	3	2	5	95
	4	2.01	100	0
	5	3	100	0



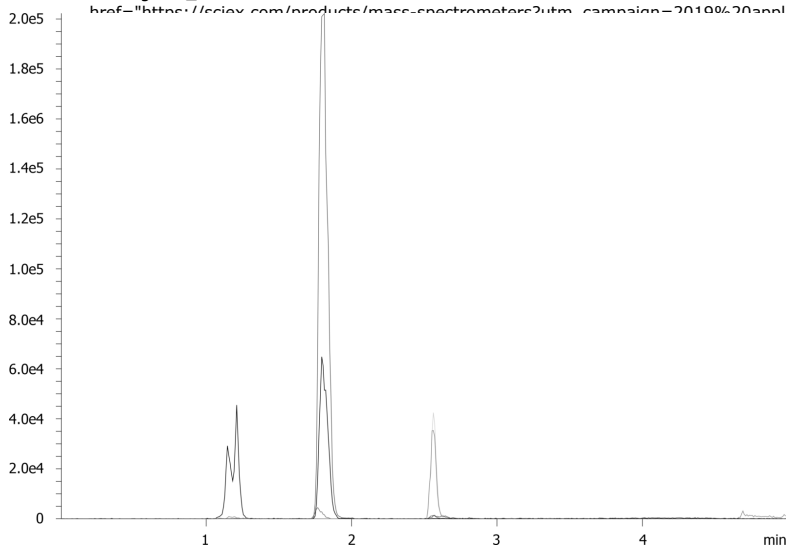
Flow Rate: 0.7 mL/min

Col. Temp.: ambient

Detection: Tandem Mass Spec (MS-MS) @ (550 °C)

Detector Info:

<a target="_blank"



ANALYTES:

- 1** Urine Interference
Retention Time: 0.73 min
- 2** Ethyl Sulfate (EtS)
Retention Time: 1.08 min
- 3** Ethyl Glucuronide (EtG)
Retention Time: 1.54 min

