

## OF tech note Fig 1, positive ESI

**Column:** Kinetex® 2.6 µm Biphenyl 100 Å, LC Column 50 x 3.0 mm, Ea

**Dimensions:** 50 x 3 mm ID

**Order No:** 00B-4622-Y0

**Elution Type:** Gradient

**Eluent A:** 0.1% formic acid in Water

**Eluent B:** 0.1% formic acid in MeOH

Gradient Profile:	Step No.	Time (min)	Pct A	Pct B
	1	0	90	10
	2	4	5	95
	3	5.5	5	95
	4	5.51	90	10
	5	7.5	90	10

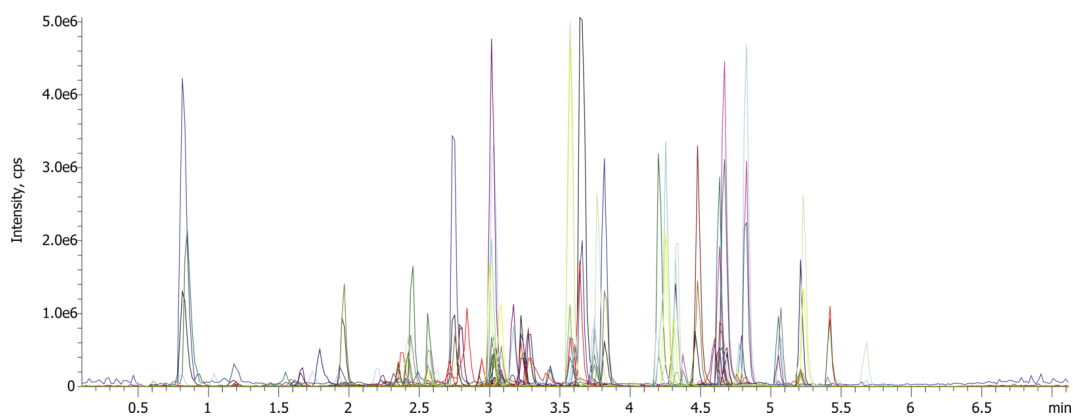
**Flow Rate:** 500 µL/min

**Col. Temp.:** ambient

**Detection:** Tandem Mass Spec (MS-MS) @ (ambient)

**Detector Info:** <a target="\_blank"

App ID 23719



Products used in this application:



### ANALYTES:

1 Pain Panel

