

HPLC Application

ID No.: 23721

OF tech note Fig 3

Column: Kinetex® 2.6 µm Biphenyl 100 Å, LC Column 50 x 3.0 mm, Ea

Dimensions: 50 x 3 mm ID

Order No: 00B-4622-Y0

Elution Type: Gradient

Eluent A: 0.1% Formic acid in water

Eluent B: 0.1% formic acid in methanol

Gradient Profile:	Step No.	Time (min)	Pct A	Pct B
	1	0	90	10
	2	4	5	95
	3	5	5	95
	4	5.01	90	10
	5	7	90	10

Flow Rate: 500 µL/min

Col. Temp.: ambient

Detection: Tandem Mass Spec (MS-MS) @ (ambient)

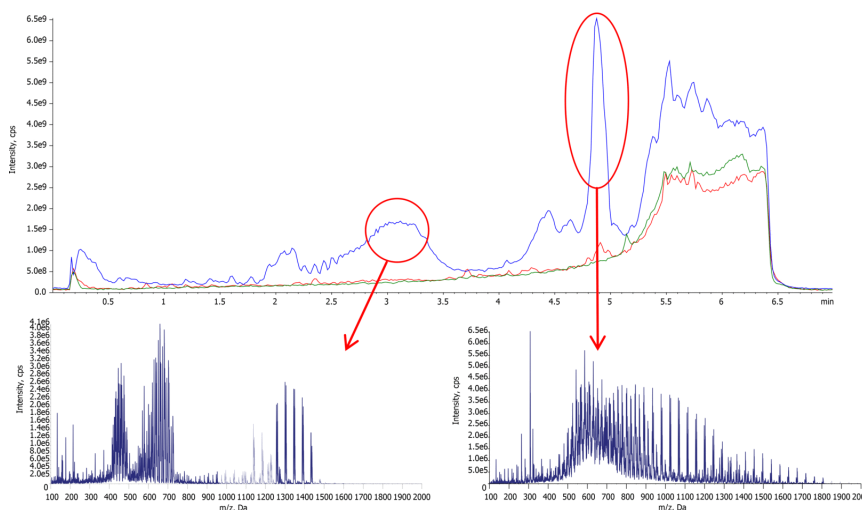
Detector Info: SCIEX



Products used in this application:



App ID 23721



ANALYTES:

- 1 Pain Panel

