

## OF tech note Fig 4

**Column:** Kinetex® 2.6 µm Biphenyl 100 Å, LC Column 50 x 3.0 mm, Ea

**Dimensions:** 50 x 3 mm ID

**Order No:** 00B-4622-Y0

**Elution Type:** Gradient

**Eluent A:** 0.1% Formic acid in water

**Eluent B:** 0.1% formic acid in methanol

Gradient Profile:	Step No.	Time (min)	Pct A	Pct B
	1	0	90	10
	2	4	5	95
	3	5	5	95
	4	5.01	90	10
	5	7	90	10

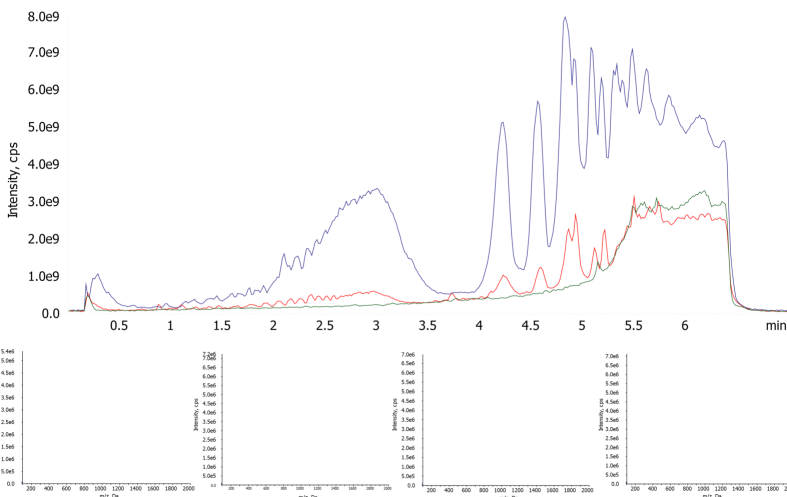
**Flow Rate:** 500 µL/min

**Col. Temp.:** ambient

**Detection:** Tandem Mass Spec (MS-MS) @ (ambient)

**Detector Info:** <a target="\_blank"

App ID 23722



Products used in this application:



## ANALYTES:

1 Pain Panel

