

# HPLC Application

ID No.: 23740

## Fast Opiates Panel on Kinetex 2.6µm Phenyl-Hexyl, 50x3mm

**Column:** Kinetex® 2.6 µm Phenyl-Hexyl 100 Å LC Column 50 x 3.0 mm, Ea

**Dimensions:** 50 x 3 mm ID

**Order No:** 00B-4495-Y0

**Elution Type:** Gradient

**Eluent A:** 0.1% Formic acid in water

**Eluent B:** 0.1% Formic acid in methanol

Gradient Profile:	Step No.	Time (min)	Pct A	Pct B
	1	0	90	10
	2	0.2	90	10
	3	1.5	60	40
	4	2	5	95
	5	2.5	5	95
	6	2.51	90	10
	7	4	90	10

**Flow Rate:** 0.7 mL/min

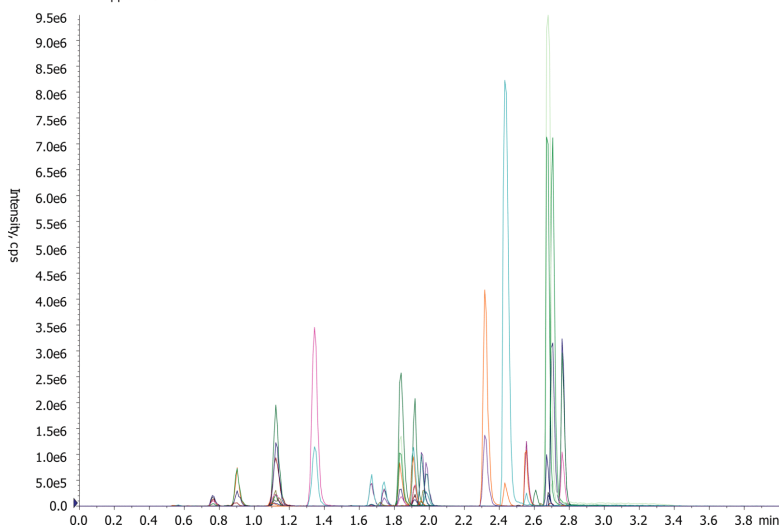
**Col. Temp.:** ambient

**Detection:** Tandem Mass Spec (MS-MS) @ (600 °C)

**Detector Info:**

<a target="\_blank"

href="https://sciex.com/products/mass-spectrometers?utm\_campaign=2019%20application%20search&utm\_source=phenomenex&utm\_medium=referral">SCIEX<



Products used in this application:



## Fast Opiates Panel on Kinetex 2.6µm Phenyl-Hexyl, 50x3mm

### ANALYTES:

- 1** 6-MAM
- 2** Buprenorphine
- 3** Codeine
- 4** EDDP
- 5** Fentanyl
- 6** Gabapentin
- 7** Hydrocodone
- 8** Hydromorphone
- 9** Meperidine
- 10** Methadone
- 11** Morphine
- 12** Naloxone
- 13** Norbuprenorphine
- 14** Norfentanyl
- 15** Norhydrocodone
- 16** Noroxycodone
- 17** O-Desmethyltramadol
- 18** Oxycodone
- 19** Oxymorphone
- 20** Pregabalin
- 21** Tramadol

