

## Scalability of Luna Omega 1.6um and 5um Polar C18 50x2.1mm

**Column:** Luna Omega 5u Polar C18 100A, LC Column 50 x 2.1 mm, Ea

**Dimensions:** 50 x 2.1 mm ID

**Order No:** 00B-4754-AN

**Elution Type:** Gradient

**Eluent A:** Water with 0.1% formic acid

**Eluent B:** Acetonitrile with 0.1% formic acid

Gradient Profile:	Step No.	Time (min)	Pct A	Pct B
	1	0	95	5
	2	5	5	95

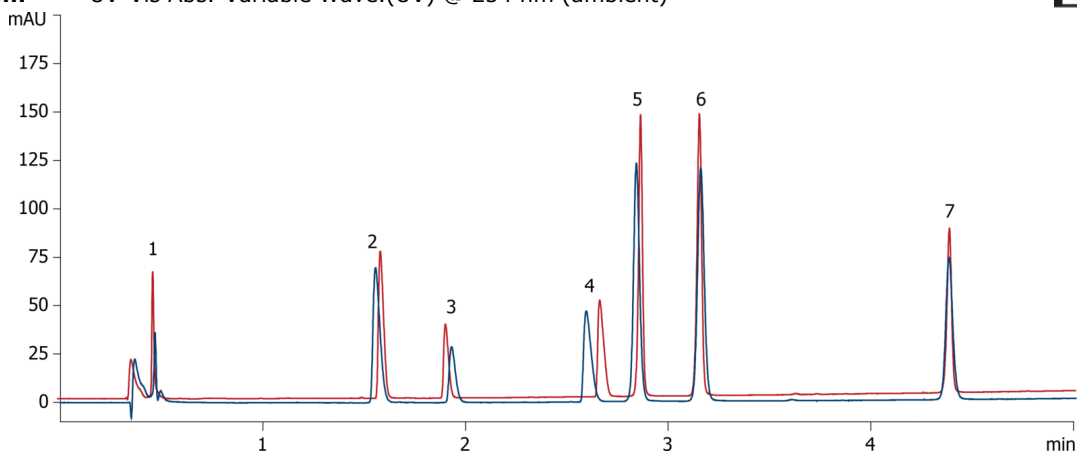
**Flow Rate:** 0.4 mL/min

**Col. Temp.:** 30 °C

**Detection:** UV-Vis Abs.-Variable Wave.(UV) @ 254 nm (ambient)



Products used in this application:



### ANALYTES:

- 1 Uracil
- 2 Pindolol
- 3 Chlorpheniramine
- 4 Nortriptyline
- 5 3-Methyl-4-Nitrobenzoic acid
- 6 5-Methyl salicylaldehyde
- 7 Hexanophenone

