

# HPLC Application

ID No.: 23748

## Tropicamide using Lux 5µm i-Cellulose-5 (After exposure to aggressive organic solvents)

**Column:** Lux<sup>®</sup> 5 µm i-Cellulose-5, LC Column 250 x 4.6 mm, Ea

**Dimensions:** 250 x 4.6 mm ID

**Order No:** 00G-4756-E0

**Elution Type:** Isocratic

**Eluent A:** 0.1% Ethylamine in MtBE

**Eluent B:** 0.1% Ethylamine in Methanol

<b>Gradient Profile:</b>	<b>Step No.</b>	<b>Time (min)</b>	<b>Pct A</b>	<b>Pct B</b>
	1	0	85	15

**Flow Rate:** 1 mL/min

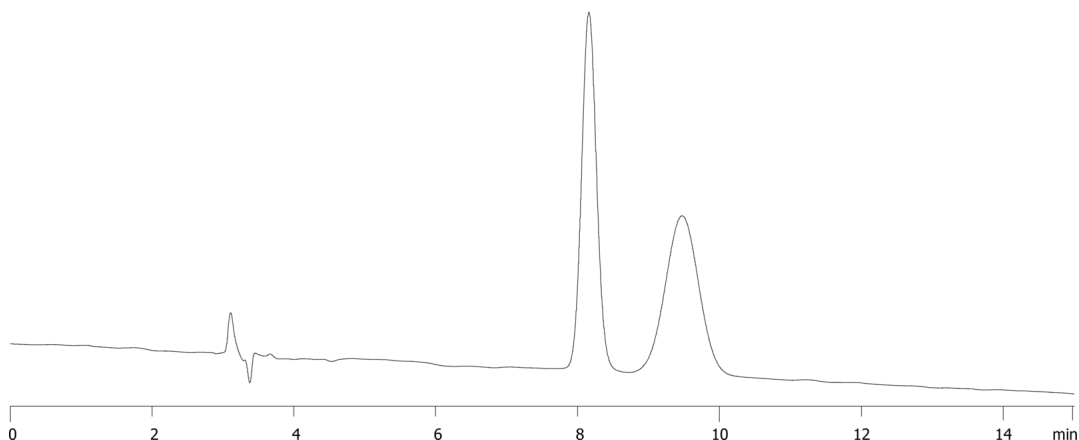
**Col. Temp.:** ambient

**Detection:** UV-Vis Abs.-Variable Wave.(UV) @ 254 nm (ambient)

**Analyst Note:** Aggressive solvents exposed: MtBE, Dichloromethane, ethyl acetate, THF, hexane, methanol, ethanol, isopropanol  
23748



Products used in this application:



### ANALYTES:

- 1 Tropicamide  
Retention Time: 8.157 min
- 2 Tropicamide  
Retention Time: 9.47 min