

# HPLC Application

ID No.: 23751

## Guaifenesin on Lux 5µm i-Cellulose-5 250x4.6mm

**Column:** Lux® 5 µm i-Cellulose-5, LC Column 250 x 4.6 mm, Ea

**Dimensions:** 250 x 4.6 mm ID

**Order No:** 00G-4756-E0

**Elution Type:** Isocratic

**Eluent A:** 0.1% DEA in n-Hexane

**Eluent B:** 0.1% DEA in Ethanol

Gradient Profile:	Step No.	Time (min)	Pct A	Pct B
	1	0	80	20

**Flow Rate:** 1.5 mL/min

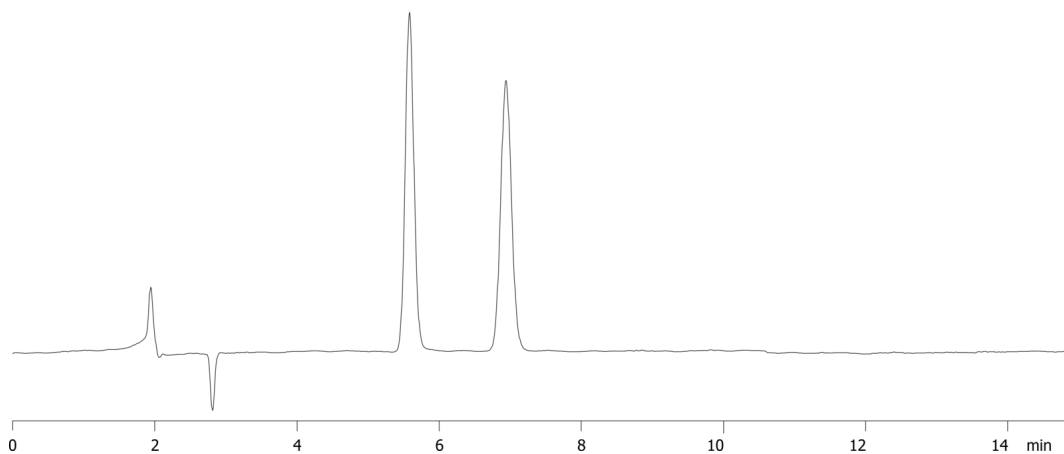
**Col. Temp.:** 27 °C

**Detection:** UV-Vis Abs.-Variable Wave.(UV) @ 230 nm (20 °C)

**Analyst Note:** Resolution = 5.32

Selectivity = 1.24

23751



### ANALYTES:

- 1** Guaifenesin  
Retention Time: 5.58 min
- 2** Guaifenesin  
Retention Time: 6.93 min



Products used in this application:

