

HPLC Application

ID No.: 23755

UHPLC initial screening using Luna Omega 1.6um Polar C18 50x2.1mm

Column: Luna Omega 1.6 um Polar C18 100 A LC Column 50 x 2.1 mm, Ea

Dimensions: 50 x 2.1 mm ID

Order No: 00B-4748-AN

Elution Type: Gradient

Eluent A: Water with 0.1% TFA

Eluent B: Acetonitrile with 0.1% TFA

Gradient Profile:	Step No.	Time (min)	Pct A	Pct B
	1	0	90	10
	2	5	10	90

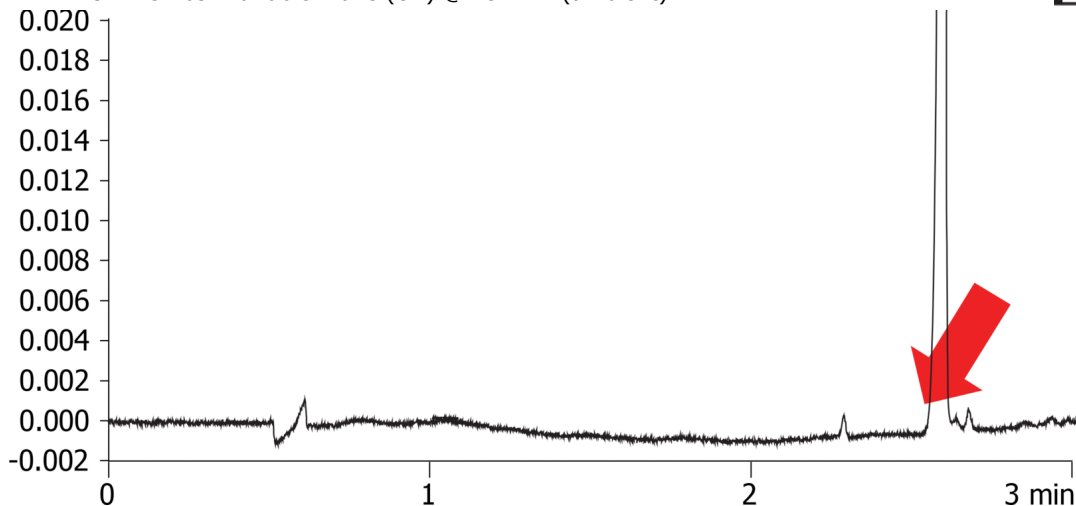
Flow Rate: 0.3 mL/min

Col. Temp.: ambient

Detection: UV-Vis Abs.-Variable Wave.(UV) @ 254 nm (ambient)



Products used in this application:



ANALYTES:

- 1 Proprietary sample

