

HPLC Application

ID No.: 23756

HPLC optimization using Luna Omega 5um Polar C18 150x4.6mm

Column: Luna Omega 5u Polar C18 100A, LC Column 150 x 4.6 mm, Ea

Dimensions: 150 x 4.6 mm ID

Order No: 00F-4754-E0

Elution Type: Gradient

Eluent A: Water with 0.1% TFA

Eluent B: Acetonitrile with 0.1% TFA

Gradient Profile:	Step No.	Time (min)	Pct A	Pct B
	1	0	90	10
	2	15	10	90

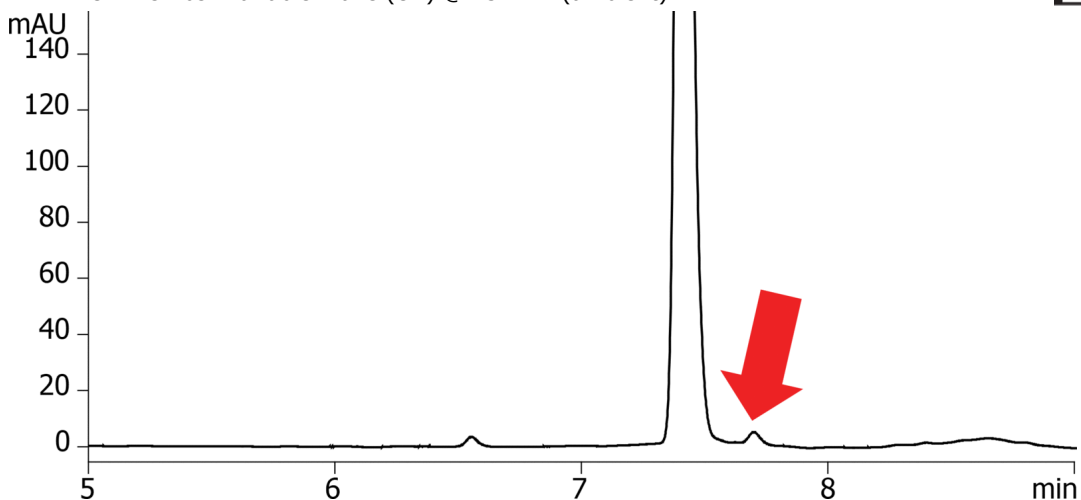
Flow Rate: 1.5 mL/min

Col. Temp.: ambient

Detection: UV-Vis Abs.-Variable Wave.(UV) @ 254 nm (ambient)



Products used in this application:



ANALYTES:

- 1 Early impurity
- 2 Main API
- 3 Late impurity

