

HPLC Application

ID No.: 23757

Prep scale using Luna Omega 5um Polar C18

Column: Luna Omega 5u Polar C18 100A, AXIA Packed, LC Column 150 x 21.2 mm, Ea

Dimensions: 150 x 21.2 mm ID

Order No: 00F-4754-P0-AX

Elution Type: Gradient

Eluent A: Water with 0.1% TFA

Eluent B: Acetonitrile with 0.1% TFA

| Gradient Profile: | Step No. | Time (min) | Pct A | Pct B |
|-------------------|----------|------------|-------|-------|
| | 1 | 0 | 90 | 10 |
| | 2 | 15 | 10 | 90 |

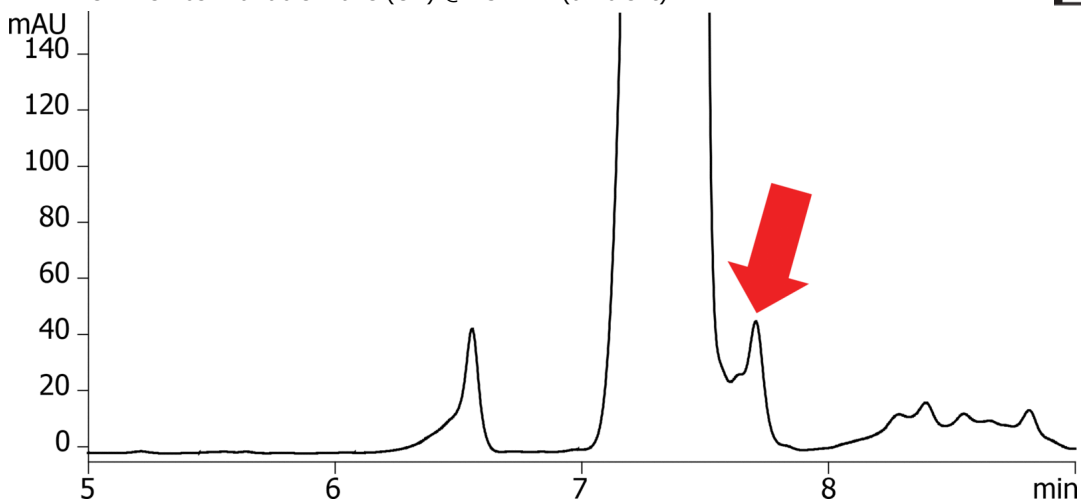
Flow Rate: 30 mL/min

Col. Temp.: ambient

Detection: UV-Vis Abs.-Variable Wave.(UV) @ 254 nm (ambient)



Products used in this application:



ANALYTES:

- 1 Early impurity
- 2 Main API
- 3 Late impurity

