

## Chiral Separation of Chlorthalidone on Lux 5u i-Cellulose-5

**Column:** Lux® 5 µm i-Cellulose-5, LC Column 250 x 4.6 mm, Ea

**Dimensions:** 250 x 4.6 mm ID

**Order No:** 00G-4756-E0

**Elution Type:** Isocratic

**Eluent A:** 0.1% Ethylamine in MtBE

**Eluent B:** 0.1% Ethylamine in MeOH

Gradient Profile:	Step No.	Time (min)	Pct A	Pct B
	1	0	96	4

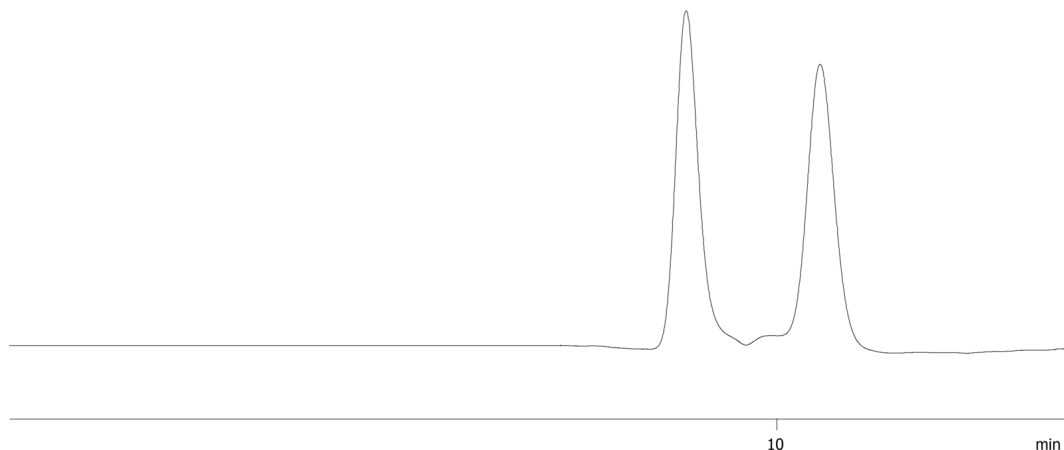
**Flow Rate:** 1 mL/min

**Col. Temp.:** ambient

**Detection:** UV-Vis Abs.-Variable Wave.(UV) @ 254 nm (ambient)  
23758



Products used in this application:



### ANALYTES:

- 1 Chlorthalidone  
Retention Time: 8.787 min
- 2 Chlorthalidone  
Retention Time: 10.564 min

