

Chiral Separation of N-Carbobenzoxy-DL-serine on Lux 3u i-Cellulose-5

Column: Lux® 3 µm i-Cellulose-5, LC Column 250 x 4.6 mm, Ea

Dimensions: 250 x 4.6 mm ID

Order No: 00G-4755-E0

Elution Type: Isocratic

Eluent A: 0.1% TFA in Hexane

Eluent B: 0.1% TFA in Ethyl Acetate

Gradient Profile:	Step No.	Time (min)	Pct A	Pct B
	1	0	50	50

Flow Rate: 1 mL/min

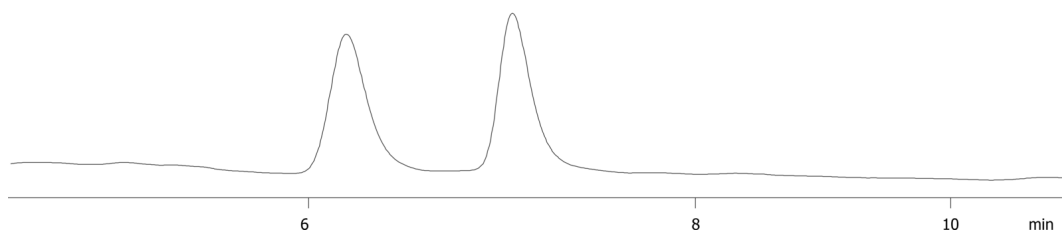
Col. Temp.: ambient

Detection: UV-Vis Abs.-Variable Wave.(UV) @ 254 nm (ambient)

23767



Products used in this application:



ANALYTES:

1 N-Carbobenzoxy-DL-serine

Retention Time: 6.193 min

2 N-Carbobenzoxy-DL-serine

Retention Time: 7.053 min

