

## Chiral Separation of Atomoxetine enantiomers on Lux i-Cellulose-5

**Column:** Lux® 5 µm i-Cellulose-5, LC Column 250 x 4.6 mm, Ea

**Dimensions:** 250 x 4.6 mm ID

**Order No:** 00G-4756-E0

**Elution Type:** Isocratic

**Eluent A:** 970:30:5 Hexane:Isopropanol:DEA

Gradient	Step No.	Time (min)	Pct A
<b>Profile:</b>	<b>1</b>	0	100

**Flow Rate:** 1 mL/min

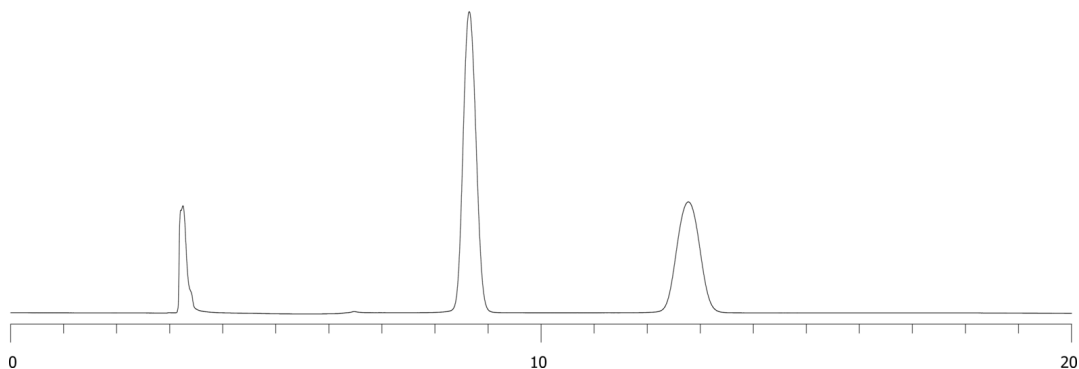
**Col. Temp.:** ambient

**Detection:** UV-Vis Abs.-Variable Wave.(UV) @ 270 nm (ambient)

23769



Products used in this application:



### ANALYTES:

- 1** Atomoxetine S-isomer

Retention Time: 8.644 min

- 2** Atomoxetine HCl

Retention Time: 12.774 min

