

HPLC Application

ID No.: 23789

Follitropin System Suitability on 5 µm Hydrophilic Silica

Column: BioSep[™] 5 µm SEC-s2000 145 Å, LC Column 300 x 7.8 mm, Ea

Dimensions: 300 x 7.8 mm ID

Order No: 00H-2145-K0

Elution Type: Isocratic

Eluent A: 100 mM Sodium Phosphate, 200 mM Sodium Sulfate, pH 6.7

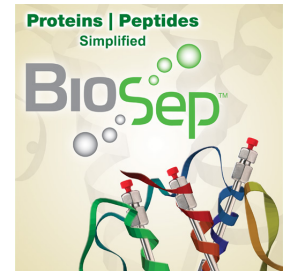
Gradient	Step No.	Time (min)	Pct A
Profile:	1	0	100

Flow Rate: 0.5 mL/min

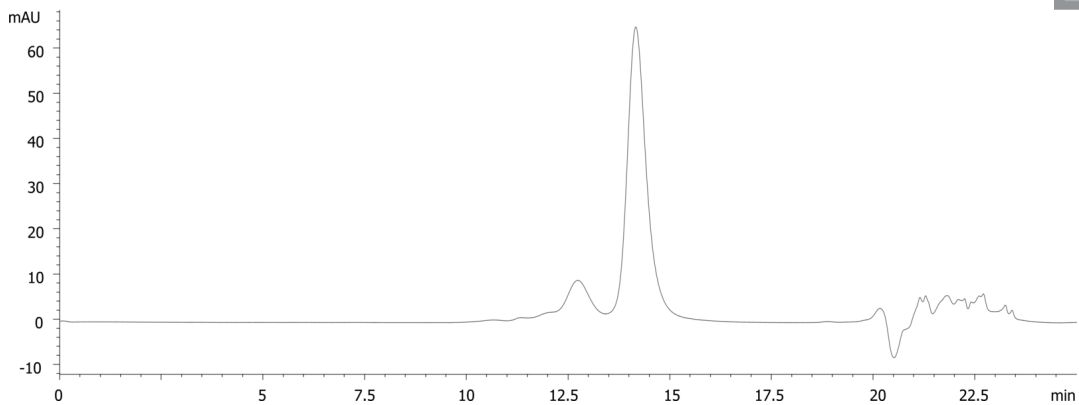
Col. Temp.: ambient

Detection: UV-Vis Abs.-Variable Wave.(UV) @ 215 nm (ambient)

23789



Products used in this application:



ANALYTES:

1 BSA

Retention Time: 12.736 min

2 Follitropin

Retention Time: 14.161 min

