

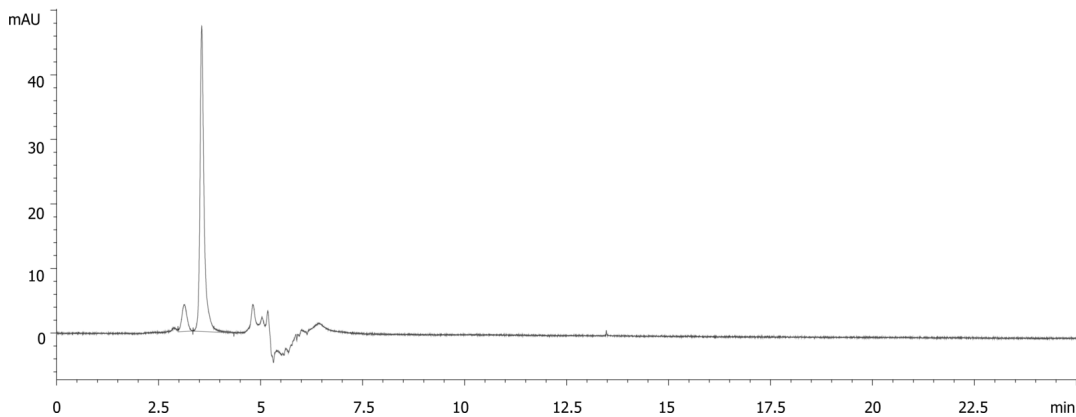
Follitropin System Suitability on Yarra SEC-X150

Column: N/A
Dimensions: N/A
Order No: N/A
Elution Type: N/A
Eluent A: 100 mM Sodium Phosphate, 200 mM Sodium Sulfate, pH 6.7
Gradient

Step No.	Time (min)	Pct A
1	0	100

Profile:
Flow Rate: 0.35 mL/min
Col. Temp.: ambient
Detection: UV-Vis Abs.-Variable Wave.(UV) @ 215 nm (ambient)

23790



ANALYTES:

- 1 BSA
Retention Time: 3.129 min
- 2 Follitropin
Retention Time: 3.557 min

