

# HPLC Application

ID No.: 23792

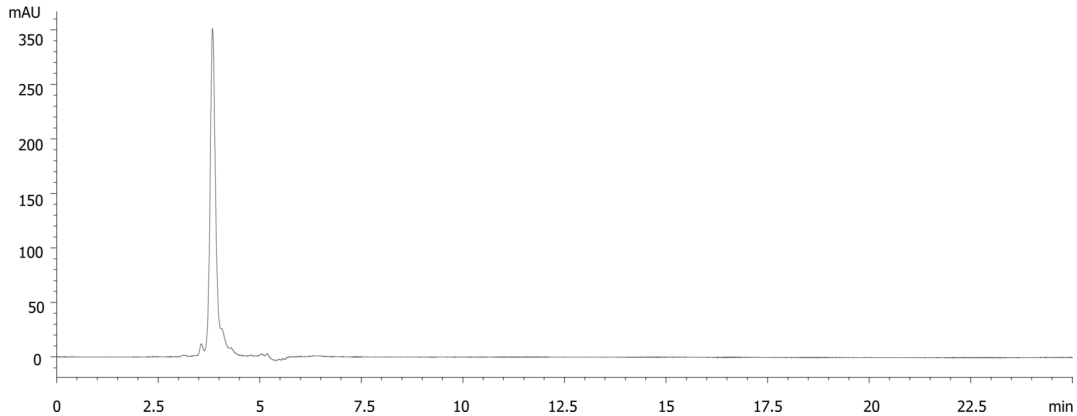
## Follitropin Reference Standard on Yarra SEC-X150

**Column:** N/A  
**Dimensions:** N/A  
**Order No:** N/A  
**Elution Type:** N/A  
**Eluent A:** 100 mM Sodium Phosphate, 200 mM Sodium Sulfate, pH 6.7  
**Gradient**

Step No.	Time (min)	Pct A
1	0	100

**Profile:**  
**Flow Rate:** 0.35 mL/min  
**Col. Temp.:** ambient  
**Detection:** UV-Vis Abs.-Variable Wave.(UV) @ 215 nm (ambient)

23792



### ANALYTES:

1 Follitropin

