

## FAMES In Infant Formula by GC/FID on Zebron ZB-FAME

**Column:** Zebron ZB-FAME, GC Cap. Column 30m x 0.25mm x 0.2µm , Ea  
**Phase:** Proprietary Pesticides Phase  
**Dimensions:** 30 meters x 0.25 mm x 0.2 µm  
**Order No:** 7HG-G033-10  
**Oven Profile:** 100 °C for 2 min to 140 °C @ 10 °C/min to 190 °C @ 3 °C/min to 260 °C @ 30 °C/min for 2 min

**Carrier Gas:** Constant Flow Helium, 1.2 mL/min  
**Injection:** Split 50:1 1 µL @ 240°C  
**Detection:** Flame Ionization (FID) (260°C)

**Analyst Note:** Recommended Liner: Zebron PLUS Single Taper with Wool, 4 mm ID  
Liner Part No.: AG2-0A11-05 (for Agilent systems)  
Inlet Seal: AG0-8620 (Gold Plated Easy Seal)  
Septum: AG0-4696 (PhenoRed-400)

### Sample Preparation:

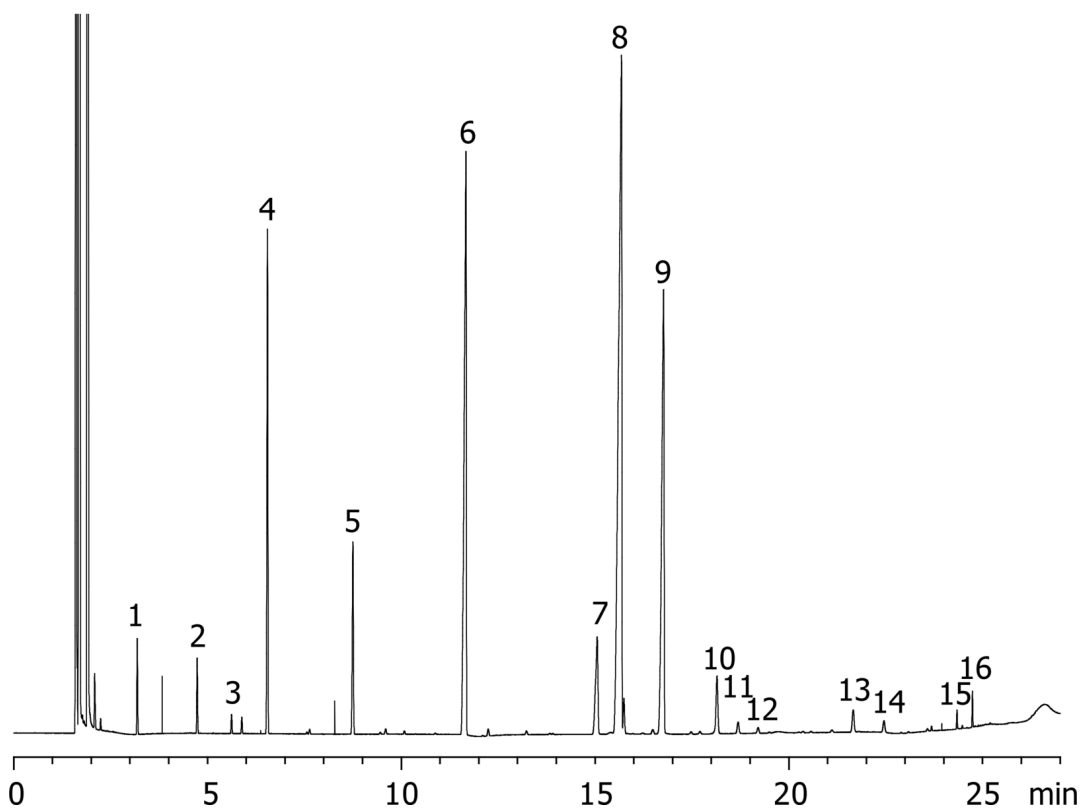
1. Weigh out 500 mg of powdered infant formula into a scintillation vial
2. Dissolve (or dilute) sample in 5 mL toluene
3. Add 6 mL 10 % acetyl chloride solution in methanol
4. Incubate @ 80 °C for 2 hours
5. After incubation add 10 mL 10 % Na<sub>2</sub>CO<sub>3</sub> solution and centrifuge at 5000 rpm for 5 min
6. Extract organic layer for GC analysis



Products used in this application:



23827



## FAMES In Infant Formula by GC/FID on Zebron ZB-FAME

### ANALYTES:

- 1 C8:0
- 2 C10:0
- 3 C11:0 (I.S.)
- 4 C12:0
- 5 C14:0
- 6 C16:0
- 7 C18:0
- 8 C18:1 cis 9
- 9 C18:2 cis 9,12
- 10 C18:3 cis 9,12,15
- 11 C20:0
- 12 C20:1 cis 11
- 13 C20:4 cis 5,8,11,14
- 14 C22:0
- 15 C24:0
- 16 C22:6 cis 4,7,10,13,16,19

