

# HPLC Application

ID No.: 23843

## Mitragynine (Kratom) & 7-OH Mitragynine on Luna Omega 1.6 µm PS C18, 50 x 2.1 mm

**Column:** Luna Omega 1.6u PS C18 100A, LC Column 50 x 2.1 mm, Ea

**Dimensions:** 50 x 2.1 mm ID

**Order No:** 00B-4752-AN

**Elution Type:** Gradient

**Eluent A:** 0.1% Formic Acid in Water

**Eluent B:** 0.1% Formic Acid in Acetonitrile

Gradient Profile:	Step No.	Time (min)	Pct A	Pct B
	1	0	90	10
	2	4	50	50
	3	4.01	10	90
	4	4.5	10	90
	5	4.51	90	10
	6	7	90	10

**Flow Rate:** 0.4 mL/min

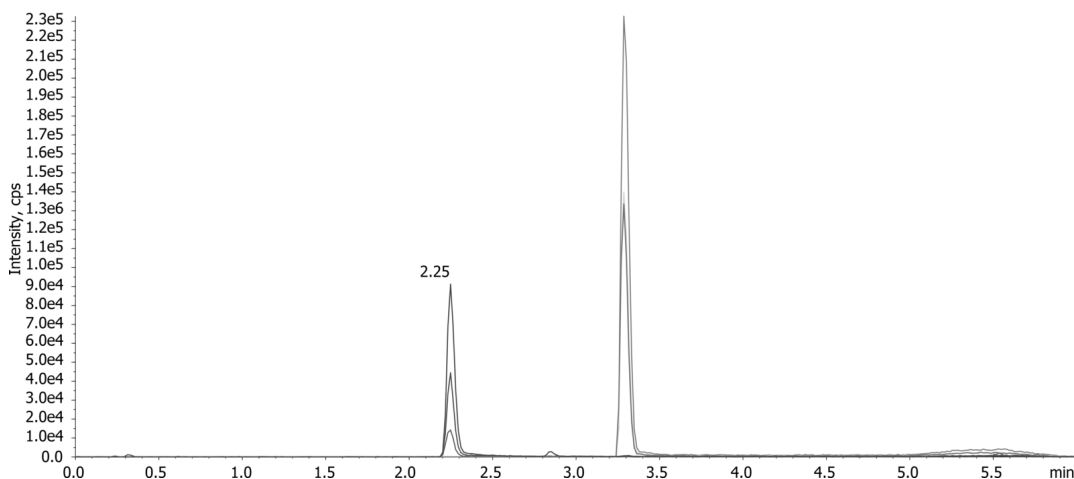
**Col. Temp.:** ambient

**Detection:** Tandem Mass Spec (MS-MS) @ (650 °C)

**Detector Info:** <a target="\_blank" href="https://sciex.com/products/mass-spectrometers?utm\_campaign=2019%20application%20search&utm\_source=phenomenex&utm\_medium=referral">SCIEX</a>  
23843



Products used in this application:



### ANALYTES:

- 1 7-OH Mitragynine  
Retention Time: 2.25 min
- 2 Mitragynine  
Retention Time: 3.29 min

