

# HPLC Application

ID No.: 23844

## Homocysteine on Luna Omega 1.6 µm PS C18, 100 x 2.1 mm

**Column:** Luna Omega 1.6u PS C18 100A, LC Column 100 x 2.1 mm, Ea

**Dimensions:** 100 x 2.1 mm ID

**Order No:** 00D-4752-AN

**Elution Type:** Gradient

**Eluent A:** 0.1% Formic Acid in Water

**Eluent B:** 0.1% Formic Acid in Methanol

Gradient Profile:	Step No.	Time (min)	Pct A	Pct B
	1	0	98	2
	2	2	70	30
	3	2.01	10	90
	4	2.5	10	90
	5	2.51	98	2
	6	3	98	2

**Flow Rate:** 0.4 mL/min

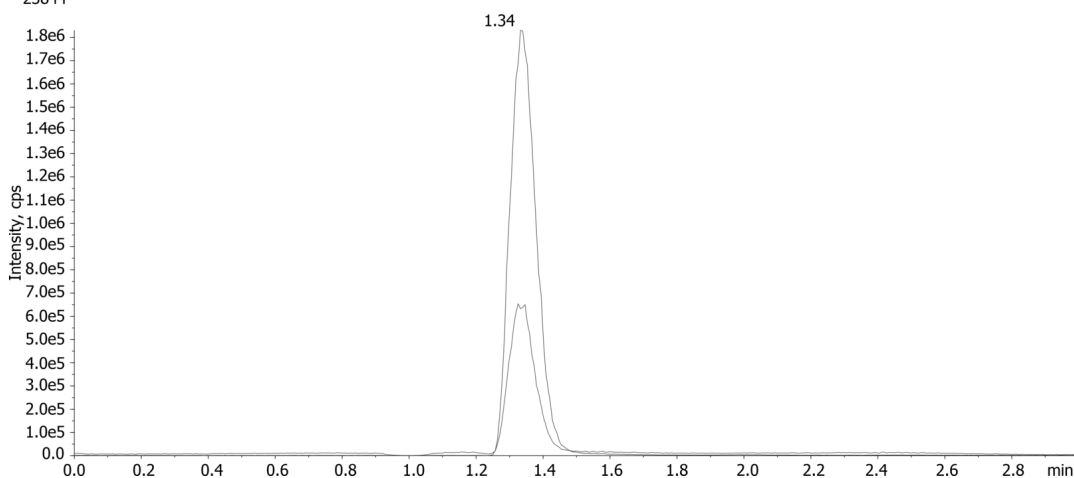
**Col. Temp.:** ambient

**Detection:** Tandem Mass Spec (MS-MS) @ (600 °C)

**Detector Info:** <a target="\_blank" href="https://sciex.com/products/mass-spectrometers?utm\_campaign=2019%20application%20search&utm\_source=phenomenex&utm\_medium=referral">SCIEX</a>



Products used in this application:



### ANALYTES:

1 Homocysteine

Retention Time: 1.34 min

