

Artificial sweetener standards by LCMS using Luna Omega 1.6u Polar C18 50x2.1mm (re-run)

Column: Luna Omega 1.6 um Polar C18 100 A LC Column 50 x 2.1 mm, Ea

Dimensions: 50 x 2.1 mm ID

Order No: 00B-4748-AN

Elution Type: Gradient

Eluent A: 0.1 Formic Acid in Water

Eluent B: 0.1% Formic Acid in Acetonitrile

Gradient Profile:	Step No.	Time (min)	Pct A	Pct B
	1	0	97	3
	2	4	0	100
	3	4.1	97	3
	4	7	97	3

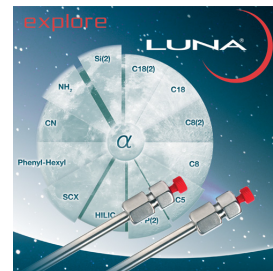
Flow Rate: 0.4 mL/min

Col. Temp.: ambient

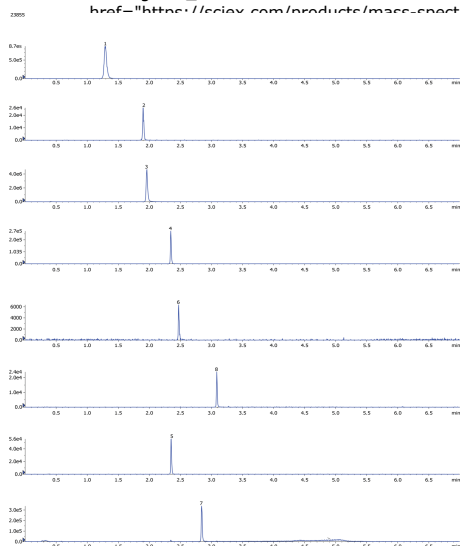
Detection: Tandem Mass Spec (MS-MS) @ (ambient)

Detector Info: <a target="_blank"

href="https://sciex.com/products/mass-spectrometers?utm_campaign=2019%20application%20search&utm_source=phenomenex&utm_medium=referral">SCIEX



Products used in this application:



ANALYTES:

- 1 Acesulfame K
Retention Time: 1.3 min
- 2 Cyclamate
Retention Time: 1.9 min
- 3 Saccharin
Retention Time: 1.96 min
- 4 Aspartame
Retention Time: 2.35 min
- 5 Sucralose
Retention Time: 2.35 min
- 6 Alitame
Retention Time: 2.47 min
- 7 Neohesperidine
Retention Time: 2.84 min
- 8 Neotame
Retention Time: 3.09 min

