

## Artificial sweeteners in Mio Energy using Luna Omega 1.6u Polar C18 50x2.1mm

**Column:** Luna Omega 1.6 um Polar C18 100 A LC Column 50 x 2.1 mm, Ea

**Dimensions:** 50 x 2.1 mm ID

**Order No:** 00B-4748-AN

**Elution Type:** Gradient

**Eluent A:** 0.1 Formic Acid in Water

**Eluent B:** 0.1% Formic Acid in Acetonitrile

| Gradient Profile: | Step No. | Time (min) | Pct A | Pct B |
|-------------------|----------|------------|-------|-------|
|                   | 1        | 0          | 97    | 3     |
|                   | 2        | 4          | 0     | 100   |
|                   | 3        | 4.1        | 97    | 3     |
|                   | 4        | 7          | 97    | 3     |

**Flow Rate:** 0.4 mL/min

**Col. Temp.:** ambient

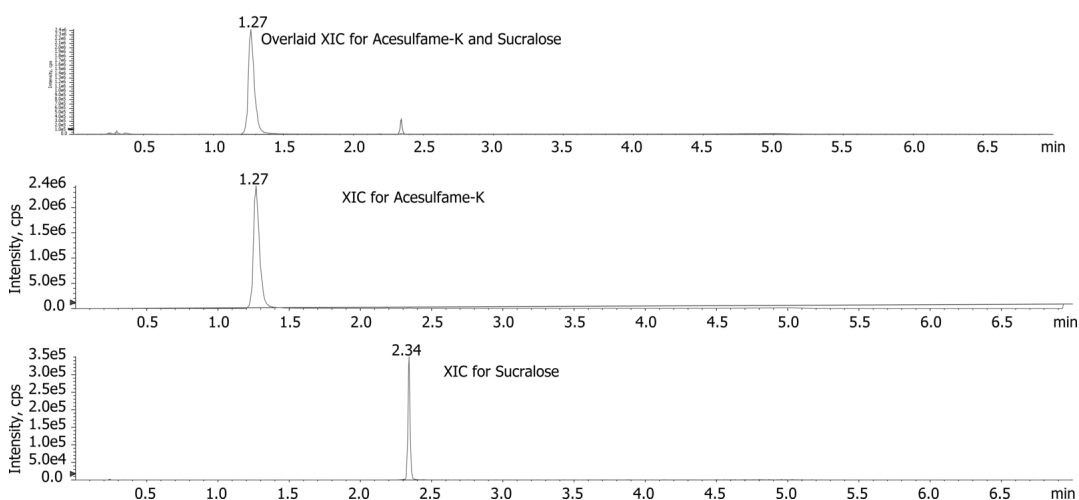
**Detection:** Tandem Mass Spec (MS-MS) @ (ambient)

**Detector Info:** <a target="\_blank" href="https://sciex.com/products/mass-spectrometers?utm\_campaign=2019%20application%20search&utm\_source=phenomenex&utm\_medium=referral">SCIEX<

23856



Products used in this application:



### ANALYTES:

**1** Acesulfame K

Retention Time: 1.27 min

**2** Sucralose

Retention Time: 2.34 min

