

HPLC Application

ID No.: 23857

Artificial sweetener standards by LCMS using Luna Omega 5u Polar C18 50x4.6mm

Column: Luna Omega 5u Polar C18 100A, LC Column 50 x 4.6 mm, Ea

Dimensions: 50 x 4.6 mm ID

Order No: 00B-4754-E0

Elution Type: Gradient

Eluent A: 0.1% Formic Acid in Water

Eluent B: 0.1% Formic Acid in Acetonitrile

Gradient Profile:	Step No.	Time (min)	Pct A	Pct B
	1	0	97	3
	2	4	0	100
	3	4.1	97	3
	4	7	97	3

Flow Rate: 0.7 mL/min

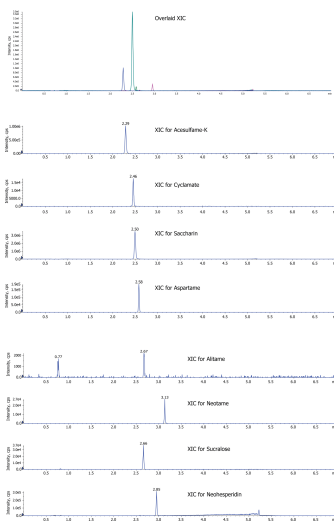
Col. Temp.: ambient

Detection: Tandem Mass Spec (MS-MS) @ (ambient)

Detector Info: SCIEX<



Products used in this application:



ANALYTES:

- 1** Acesulfame K
Retention Time: 2.29 min
- 2** Cyclamate
Retention Time: 2.46 min
- 3** Saccharin
Retention Time: 2.5 min
- 4** Aspartame
Retention Time: 2.58 min
- 5** Sucralose
Retention Time: 2.66 min
- 6** Alitame
Retention Time: 2.67 min
- 7** Neohesperidine
Retention Time: 2.95 min
- 8** Neotame
Retention Time: 3.13 min

