

Chiral Separation of 2-Chloromandelic Acid on Lux 3µm i-Cellulose-5

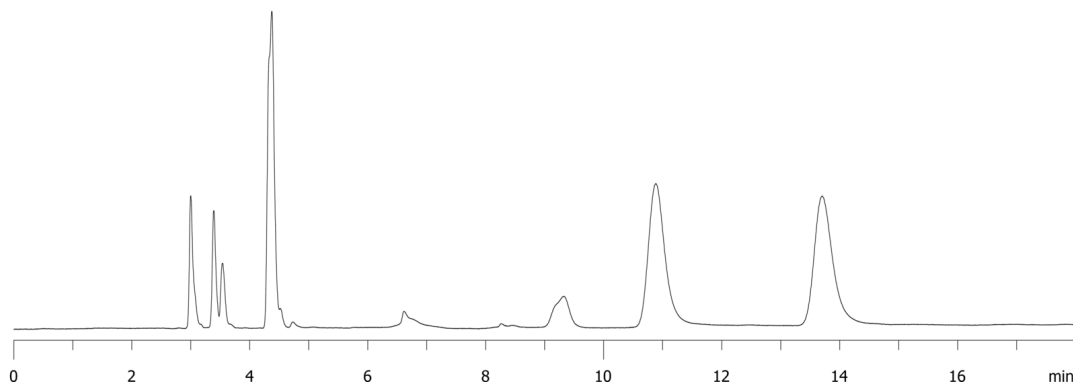
Column: Lux® 3 µm i-Cellulose-5, LC Column 250 x 4.6 mm, Ea
Dimensions: 250 x 4.6 mm ID
Order No: 00G-4755-E0
Elution Type: Isocratic
Eluent A: 0.1% TFA in Dichloromethane
Eluent B: 0.1% TFA in IPA
Gradient

Step No.	Time (min)	Pct A	Pct B
1	0	99	1

Profile:
Flow Rate: 1 mL/min
Col. Temp.: ambient
Detection: UV-Vis Abs.-Variable Wave.(UV) @ 270 nm (ambient)
23880



Products used in this application:



ANALYTES:

1 2-Chloromandelic acid

Retention Time: 10.881 min

2 2-Chloromandelic acid

Retention Time: 13.7 min

