

# HPLC Application

ID No.: 23883

## Chiral Separation of 2-Bromo-1-Indanone on Lux 5 $\mu$ m i-Cellulose-5

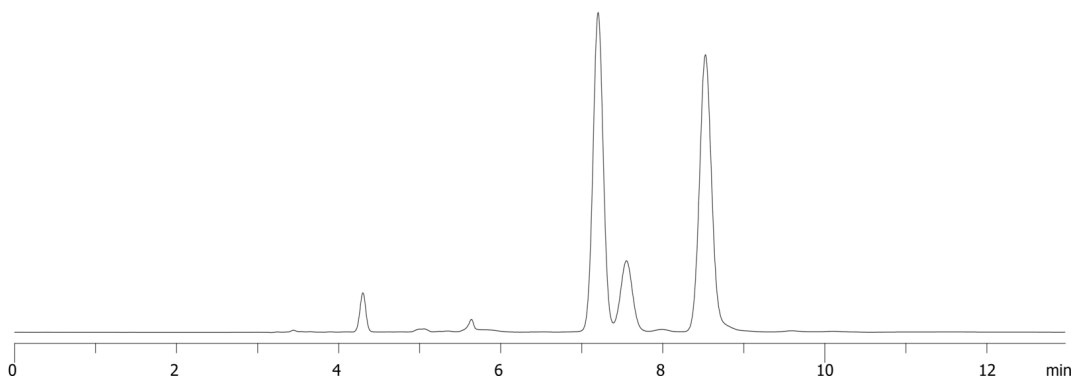
**Column:** Lux<sup>®</sup> 5  $\mu$ m i-Cellulose-5, LC Column 250 x 4.6 mm, Ea  
**Dimensions:** 250 x 4.6 mm ID  
**Order No:** 00G-4756-E0  
**Elution Type:** Isocratic  
**Eluent A:** Hexane  
**Eluent B:** THF  
**Gradient**

Step No.	Time (min)	Pct A	Pct B
1	0	85	15

**Profile:**  
**Flow Rate:** 1 mL/min  
**Col. Temp.:** ambient  
**Detection:** UV-Vis Abs.-Variable Wave.(UV) @ 254 nm (ambient)  
23883



Products used in this application:



### ANALYTES:

1 2-Bromo-1-Indanone

Retention Time: 7.2 min

2 2-Bromo-1-Indanone

Retention Time: 8.524 min

