

HPLC Application

ID No.: 23885

Chiral Separation of Tetramisole on Lux 5 μ m i-Cellulose-5

Column: Lux[®] 5 μ m i-Cellulose-5, LC Column 250 x 4.6 mm, Ea

Dimensions: 250 x 4.6 mm ID

Order No: 00G-4756-E0

Elution Type: Isocratic

Eluent A: 0.1% DEA in Hexane

Eluent B: 0.1% DEA in Ethanol

Gradient Profile:	Step No.	Time (min)	Pct A	Pct B
	1	0	70	30

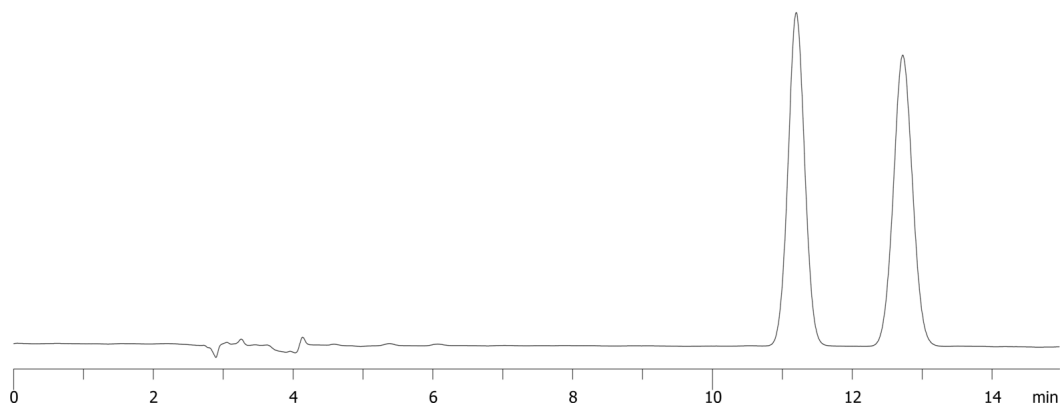
Flow Rate: 1 mL/min

Col. Temp.: ambient

Detection: UV-Vis Abs.-Variable Wave.(UV) @ 254 nm (ambient)
23885



Products used in this application:



ANALYTES:

1 Tetramisole

Retention Time: 11.2 min

2 Tetramisole

Retention Time: 12.72 min

