

Chiral Separation of Tetramisole on Lux 3µm i-Cellulose-5

Column: Lux® 3 µm i-Cellulose-5, LC Column 250 x 4.6 mm, Ea

Dimensions: 250 x 4.6 mm ID

Order No: 00G-4755-E0

Elution Type: Isocratic

Eluent A: 0.1% DEA in Hexane

Eluent B: 0.1% DEA in Ethanol

| Gradient Profile: | Step No. | Time (min) | Pct A | Pct B |
|-------------------|----------|------------|-------|-------|
| | 1 | 0 | 70 | 30 |

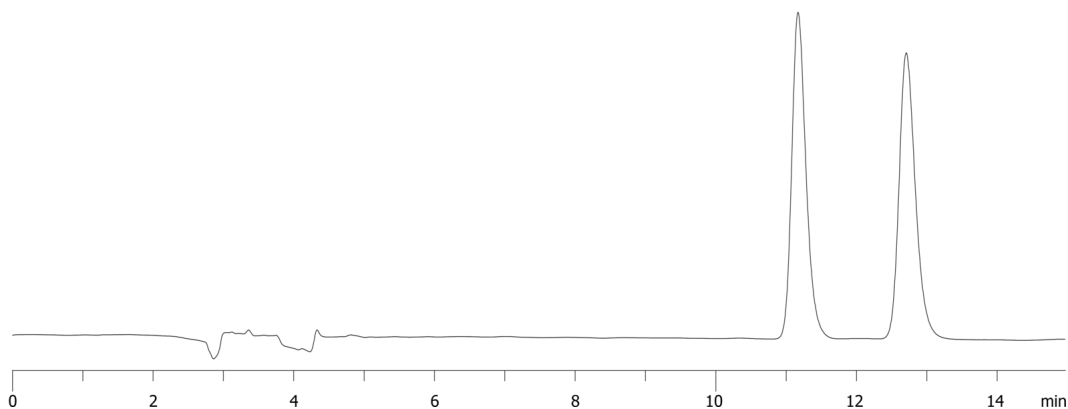
Flow Rate: 1 mL/min

Col. Temp.: ambient

Detection: UV-Vis Abs.-Variable Wave.(UV) @ 254 nm (ambient)
23886



Products used in this application:



ANALYTES:

- 1** Tetramisole
Retention Time: 11.16 min
- 2** Tetramisole
Retention Time: 12.7 min