

## Chiral Separation of Sulpiride on Lux 5µm i-Cellulose-5

**Column:** Lux® 5 µm i-Cellulose-5, LC Column 250 x 4.6 mm, Ea

**Dimensions:** 250 x 4.6 mm ID

**Order No:** 00G-4756-E0

**Elution Type:** Isocratic

**Eluent A:** 0.1% DEA in Hexane

**Eluent B:** 0.1% DEA in THF

Gradient Profile:	Step No.	Time (min)	Pct A	Pct B
	1	0	60	40

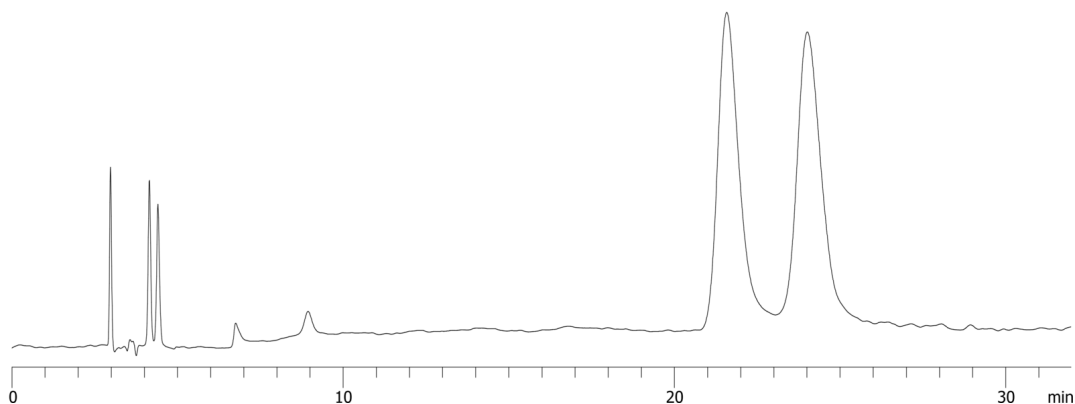
**Flow Rate:** 1 mL/min

**Col. Temp.:** ambient

**Detection:** UV-Vis Abs.-Variable Wave.(UV) @ 254 nm (ambient)  
23887



Products used in this application:



### ANALYTES:

**1** Sulpiride

Retention Time: 21.513 min

**2** Sulpiride

Retention Time: 24.005 min

