

# HPLC Application

ID No.: 23888

## Chiral Separation of Sulpiride on Lux 3 $\mu$ m i-Cellulose-5

**Column:** Lux<sup>®</sup> 3  $\mu$ m i-Cellulose-5, LC Column 250 x 4.6 mm, Ea

**Dimensions:** 250 x 4.6 mm ID

**Order No:** 00G-4755-E0

**Elution Type:** Isocratic

**Eluent A:** 0.1% DEA in Hexane

**Eluent B:** 0.1% DEA in THF

Gradient Profile:	Step No.	Time (min)	Pct A	Pct B
	1	0	60	40

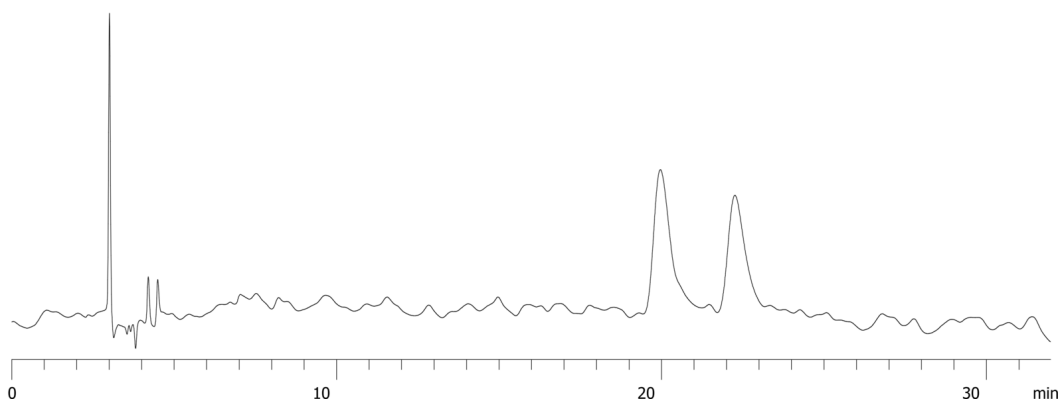
**Flow Rate:** 1 mL/min

**Col. Temp.:** ambient

**Detection:** UV-Vis Abs.-Variable Wave.(UV) @ 254 nm (ambient)  
23888



Products used in this application:



### ANALYTES:

1 Sulpiride

Retention Time: 19.96 min

2 Sulpiride

Retention Time: 22.254 min

