

Chiral Separation of Nicardipine on Lux 3µm i-Cellulose-5

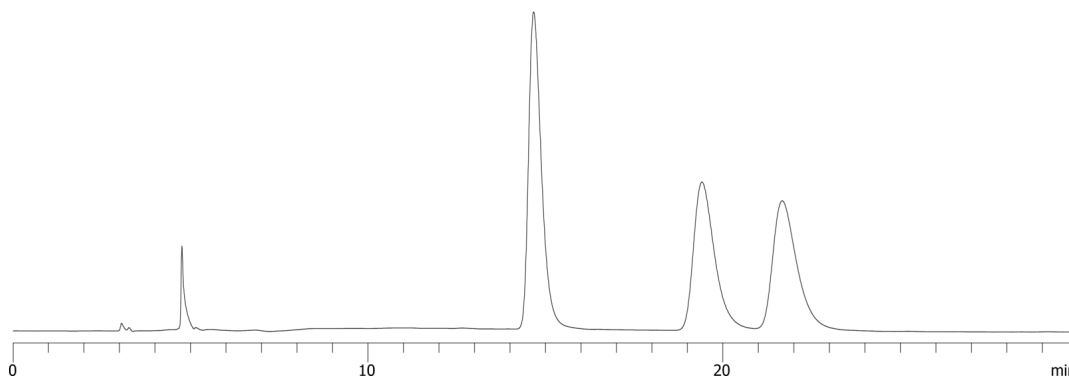
Column: Lux® 3 µm i-Cellulose-5, LC Column 250 x 4.6 mm, Ea
Dimensions: 250 x 4.6 mm ID
Order No: 00G-4755-E0
Elution Type: Isocratic
Eluent A: 0.1% DEA in Hexane
Eluent B: 0.1% DEA in IPA
Gradient

Step No.	Time (min)	Pct A	Pct B
1	0	90	10

Profile:
Flow Rate: 1 mL/min
Col. Temp.: ambient
Detection: UV-Vis Abs.-Variable Wave.(UV) @ 254 nm (ambient)
23892



Products used in this application:



ANALYTES:

- 1 Nicardipine
Retention Time: 14.665 min
- 2 Nicardipine
Retention Time: 19.406 min
- 3 Nicardipine
Retention Time: 21.668 min