

## Barbiturates from urine by Strata X (60mg/3cc) (TIC)

**Column:** Zebtron™ ZB-Drug-1, GC Cap. Column 10 m x 0.18 mm x 0.18 µm, Ea

**Phase:** Proprietary Drug Phase

**Dimensions:** 10 meters x 0.18 mm x 0.18 µm

**Order No:** 7CD-G023-08

**Oven Profile:** 145 °C to 300 °C @ 25 °C/min

**Carrier Gas:** Constant Flow Helium, 0.6 mL/min

**Injection:** Split 10:1 1 µL @ 280°C

**Detection:** Mass Selective (MSD) (320°C)

**Analyst Note:** Analytes are 300ng/mL in urine derivatized with TMPAH

Sim ions:

(Quant ion\*) D5-Butalbital (\*201,184,214): Butalbital (\*196,181,138): Amobarbital (\*169,184,225):

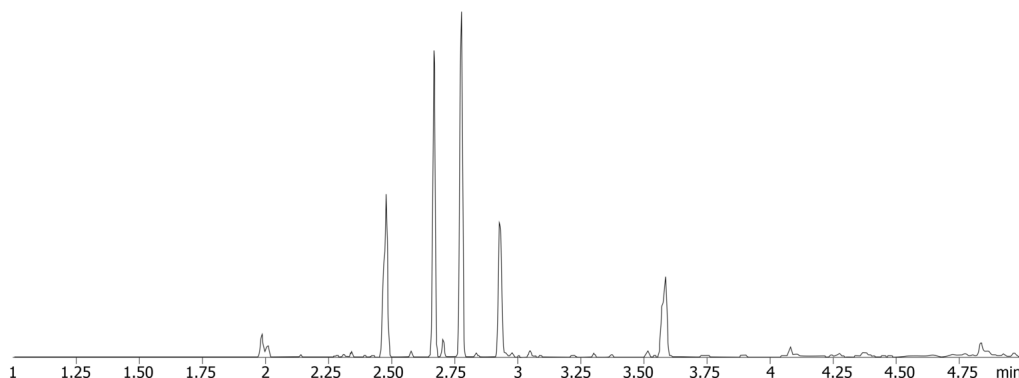
Pentobarbital (\*169,184,225): Secobarbital (\*196,181,138): D5-Phenobarbital (\*233,151,122): Phenobarbital



Products used in this application:



23895



### ANALYTES:

- 1 Butalbital-d5
- 2 Butalbital
- 3 Amobarbital
- 4 Pentobarbital
- 5 Secobarbital
- 6 Phenobarbital-d5
- 7 Phenobarbital



# Sample Preparation Details

for GC Application ID No.: 23895

## Barbiturates from urine by Strata X (60mg/3cc) (TIC)

### PRODUCT DESCRIPTION:

Strata™-X 33 µm Polymeric Reversed Phase, 60 mg / 3 mL, Tubes , 50/Pk

Order No.: 8B-S100-UBJ

### SOLID PHASE EXTRACTION (SPE) PROCEDURE:

**Note:** The solvent volumes shown below are for a 60 mg bed mass.

The solvent volumes will need to be adjusted for a smaller or larger bed mass.

#### Condition:

---

#### Load:

---

1mL of Urine + 1mL 20mM Potassium Phosphate pH 2.7

#### Wash:

---

#### Dry:

---

Dry column (5 minutes at > 10 inches Hg)

#### Elute:

---

### Final Prep and Analysis:

---

Reconstitute with 100µL Acetonitrile and 50µL of Thermo Scientific MethElute Reagent (TS49301)

Inject: 1 µL on HPLC Mass Selective (MSD) @ \_ (320°C)

ANALYTES:	Spiked Conc. (ng/mL)	Log P	pKa	% Rec	%RSC (n=0)
1 Butalbital-d5	0				
2 Butalbital	0				
3 Amobarbital	0				
4 Pentobarbital	0				
5 Secobarbital	0				
6 Phenobarbital-d5	0				
7 Phenobarbital	0				

**Note:** This method is designed as a convenient starting point for further investigation and can be tailored to meet your extraction goals. Call your local Phenomenex Representative for assistance in method development and optimization techniques.

©2024 Phenomenex Inc. All rights reserved.

For more information contact your Phenomenex Representative at support@phenomenex.com



Phenomenex products are available worldwide.

[www.phenomenex.com](http://www.phenomenex.com)

[support@phenomenex.com](mailto:support@phenomenex.com)