

## Cannabinoid potency test using Kinetex 2.6u C18 50x4.6mm

**Column:** Kinetex® 2.6 µm C18 100 Å, LC Column 50 x 4.6 mm, Ea

**Dimensions:** 50 x 4.6 mm ID

**Order No:** 00B-4462-E0

**Elution Type:** Gradient

**Eluent A:** 10mM Ammonium Formate

**Eluent B:** Methanol

Gradient Profile:	Step No.	Time (min)	Pct A	Pct B
	1	0	32	68
	2	6	24	76
	3	10	0	100
	4	11.75	0	100
	5	12.5	32	68
	6	15	32	68

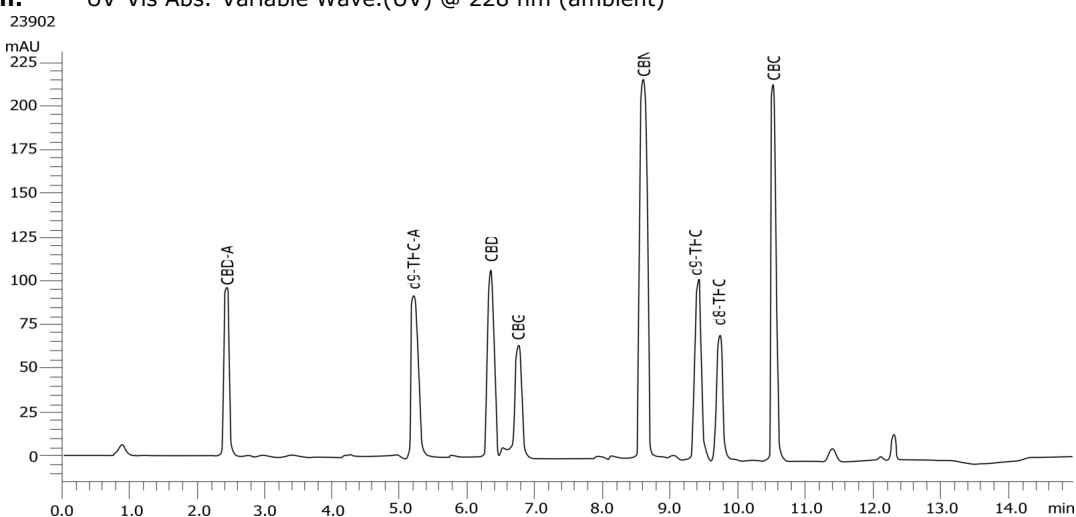
**Flow Rate:** 1 mL/min

**Col. Temp.:** 30 °C

**Detection:** UV-Vis Abs.-Variable Wave.(UV) @ 228 nm (ambient)



Products used in this application:



### ANALYTES:

- 1 CBD-A
- 2 d9-THC-A
- 3 CBD
- 4 CGB
- 5 CBN
- 6 d9-THC
- 7 d8-THC
- 8 CBC

